



2023 BROCHURE

WOODWORTH CABINETRY



WOODWORTH CABINETRY VERSION 2023



TABLE OF CONTENTS

03 About Us

04 Become Our Dealer & WLink System

05 Door Styles & Finishes

07 Finest Furniture Finishes

08 Superior Construction

09 Cabinet Dimensions

12 Warranty

14 Maintenance & Care

17 Base Cabinets

23 Wall Cabinets

42 Pantry & Oven Cabinets

45 Storage & Organization

48 Hoods, Valance, Corbel & Posts

51 Bathroom Vanities

55 Dummy Doors, Drawers & Replacements

57 Panels & Fillers

64 Moldings





ABOUT US

40+ YEARS OF QUALITY SERVICE IN CABINETRY

Woodworth Cabinetry is a primary manufacturer and distributor, specializing in making a house, a home. We offer high-quality home décor and solid wood ready-to-assemble (RTA) kitchen and bath cabinetry to dealers across North America.

As our own manufacturer, we are able to oversee every part of the process, maintaining quality control and supervision over cabinet production, using detailed hand-crafting from trained carpenters and our high-tech machinery.

We have styles ranging from elegant and traditional, to sleek and contemporary. Some of our best sellers include white and grey Shaker-style cabinets and charcoal-grey Willow, all with finishes that stand the test of time.

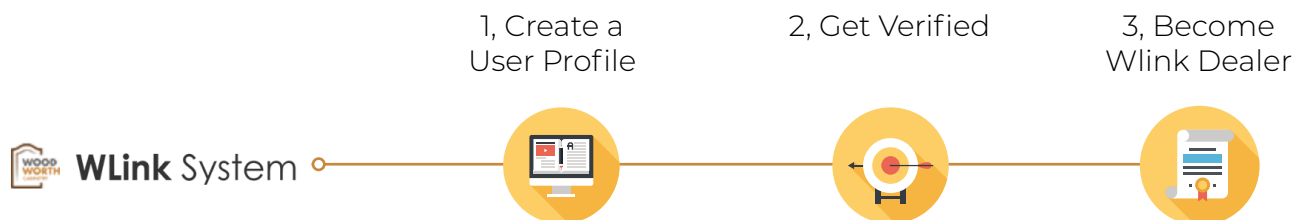
Woodworth Cabinetry makes cabinetry easy. Our manufacturing and distributing process is quick, customized, and quality assured. Whether it be a busy home with family or friends, or a space to house independence, we cater to it. Make Woodworth part of the family, and help make a house, a home.

Become Our Dealer

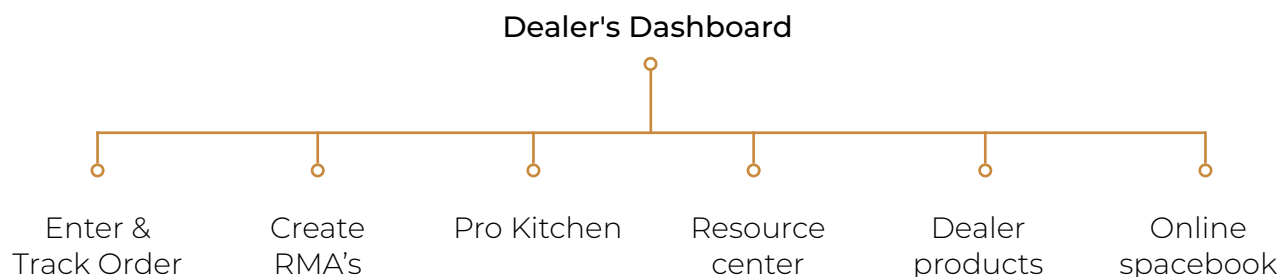
At Woodworth Cabinetry, we pride ourselves on our commitment to making our worldwide business relationships last a lifetime. To achieve this, we not only have a diverse inventory of styles and accessories to choose from, but also dedicated customer service, a comprehensive marketing strategy, and an online ordering tool that is simple and efficient.

WLink System

Our WLink System is Woodworth's online ordering tool specifically for our dealers. Once you register as a dealer, you will have a user-friendly, customized online dashboard.



After logging in to our dealer's dashboard, you can conveniently search for inventory and its information, place an order, and track your order progress, all in one place.



Woodworth Cabinetry caters to both individual households and large-scale builders, customizing your orders to specifically meet your needs.

Door Styles & Finishes

Woodworth Cabinetry brings your dream kitchen to life. Whether your taste is transitional, contemporary, or perhaps paint to stain, we will have what you're looking for. Whichever door combination you choose, you will always see the same high-quality, dream-come-true results.

Doors: Our compact doors are built with a soft-close mechanism and integrated with concealed six-way adjustable hinges. Each has solid wood door frames with 3/8" MDF center panels. Doors are full overlay with mortise and tenon construction.

Drawers: Our 5-piece drawers have recessed panel fronts. Each is a 5/8" solid wood drawer box made with dovetail construction. Drawers are built with DTC soft-close full extension and integrated with concealed drawer runners.

Boxes: Our boxes are carefully crafted with dovetail construction. Each are constructed with 1/2" select birch plywood. Boxes are built with 3/4" adjustable shelves, edge-banded in a wood veneer finished interior.

Finishing: At Woodworth Cabinetry, finishing is available in nine beautiful finishes. Most finishes are natural wood veneer finished interiors. Upgrades are available in various high sheen finishes.

Transitional Style



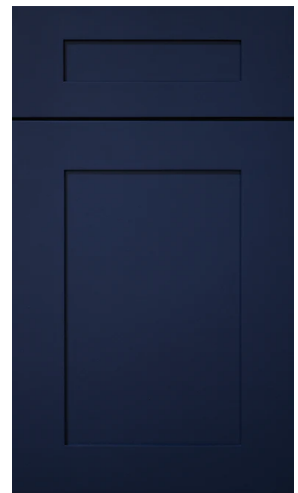
Shaker
Space Grey



Shaker
Grey



Shaker
White



Shaker
Navy Blue

** We at Woodworth Cabinetry want to ensure that you are satisfied with your order. Although the photographs and color samples are reproduced as accurately as possible, they are for representation only, and we still recommend viewing an actual product before ordering.*

Classic Style



Willow Charcoal



Coming Soon

Modern Style



Alvic-Luxe
Basalto-Slab



Alvic-Luxe
Blanco-Slab



Alvic-Syncron
Ida 02 Slab



Alvic-Syncron
Ida 03 Slab

FINEST FURNITURE FINISHES

Your choice of cabinetry breathes life into your space and is a reflection of your lifestyle. Some homes require modern interiors, where others are more suited for a country feel. Start with your style first, then choose your cabinet door style that compliments it.

As for popularity, flat door panels are in because of their style simplicity and their ability to blend in a variety of design schemes. The “Shaker” style door is the most commonly chosen among the flat door panels due to their clean lines and visual appeal. Additional flat door panel styles include beadboard cabinet doors and raised panel doors. If you’re looking for a coastal look, go for the beadboard cabinet doors because of the beadboard panels placed in the middle rather than having a plain centre. On the other hand, if your taste is more formal or traditional, we recommend the raised panel doors where the centre panel is elevated, giving more of a decorative look to your cabinetry.

To help you in choosing the perfect cabinetry for your space, it is important to know about the terms “inset” and “overlay”, which refers to the space showing around the frame of the cabinet box. “Inset” is when the door is set “snugly” inside the frame. A snug fit requires precise measurements for wood expansion and contraction during temperature changes, therefore “inset” doors are more expensive.

To this day, painted doors are still among the most popular cabinets on the market. At Woodworth Cabinetry, we use the highest-grade paint that Sherwin Williams offers. Paint tones may differ slightly, depending on doors, drawer fronts, and face frames. That being said, there are a few other things to note before you make your decision. A home is meant to be lived in, therefore hand prints, finger prints, daily-use residue, and marks and chips in the paint require more maintenance on painted doors. It’s also important to remember that with temperature changes, wood naturally expands and contracts, which can cause hairline cracks in the finish and the joints, specifically around miter joints. Because the expansion and contraction of wood is common in the industry, Woodworth Cabinetry uses MDF (Medium-Density Flatboard) for the center panels in all painted cabinetry to help with stability.

We recommend you order sample doors to see how it will look in your space with the changes in lighting and temperature. Remember, the kitchen is the heart of the home, so be sure to consider not just the look, but also the feel of the cabinetry you want to choose.



| SUPERIOR CONSTRUCTION

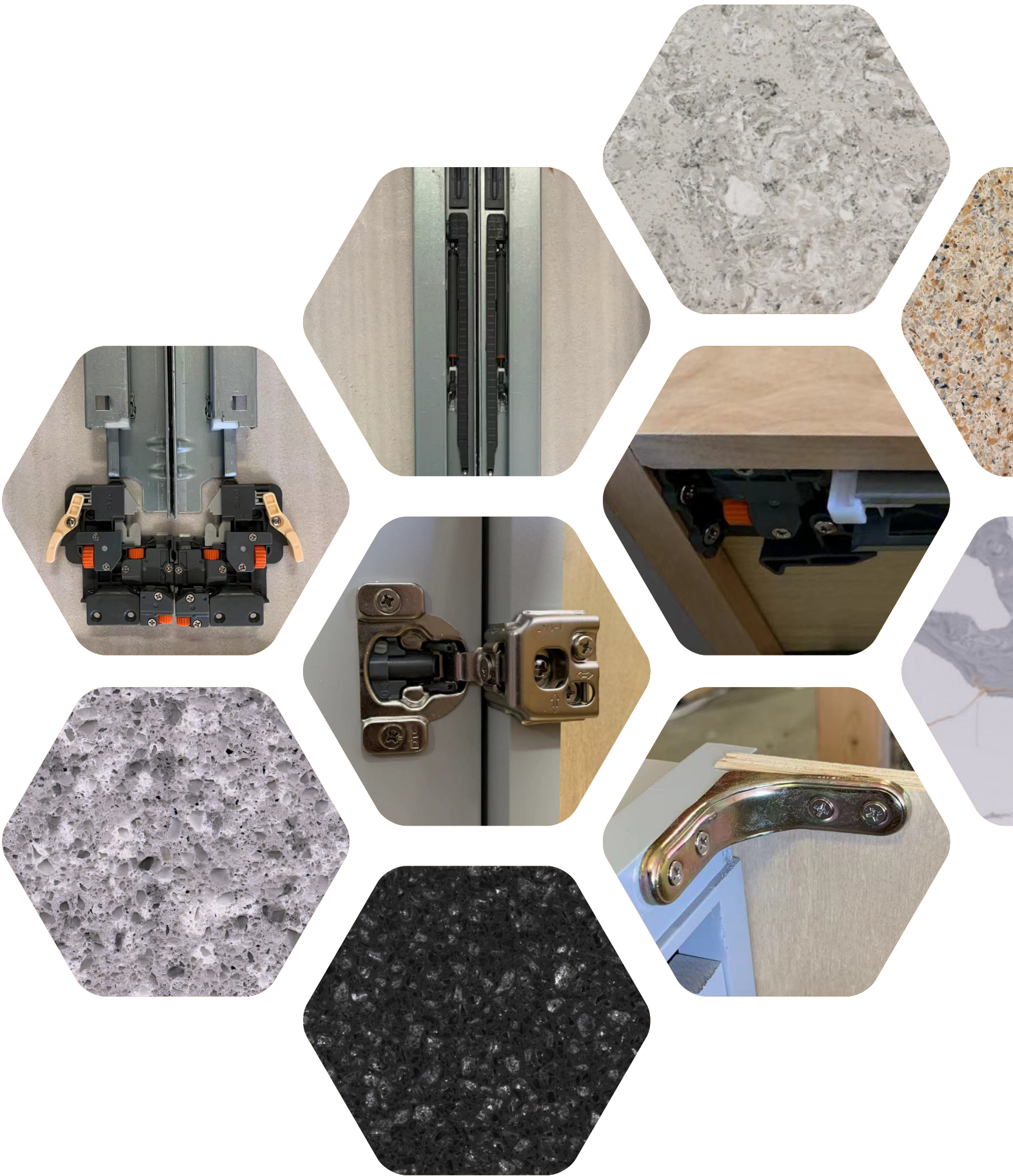
Quality control is our top priority. Our materials, carpenters, and machinery are all top-tier and strictly supervised. If there are design changes or concerns from our customers, we are able to respond with our ad hoc quality control.

Our warehouse is always fully-stocked with ready-to-assemble (RTA) cabinetry and vanities, making your orders ready for pick-up or delivery quickly and easily.

We are nothing without our customers, therefore all of our cabinets at Woodworth Cabinetry and semi-customizable, ready-to-assemble (RTA), and ready-to-build (RTB). Construction is taken seriously at Woodworth Cabinetry, and our products are finely crafted with solid wood doors and frames, 1/2" to 5/8" thick plywood boxes, soft-close metal door hinges, 3/4" to full extension drawers with soft-close metal glides, and more.

We strive to continuously improve and expand our product quality, designs, and styles, therefore the functionality may vary slightly between existing and new products. Please continue to check back with Woodworth Cabinetry for our latest styles and updates.

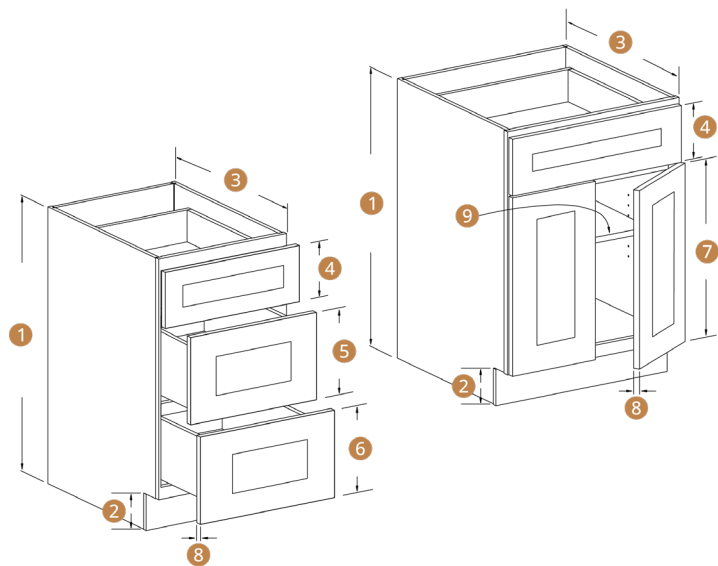




CABINET DIMENSIONS

KITCHEN CABINET

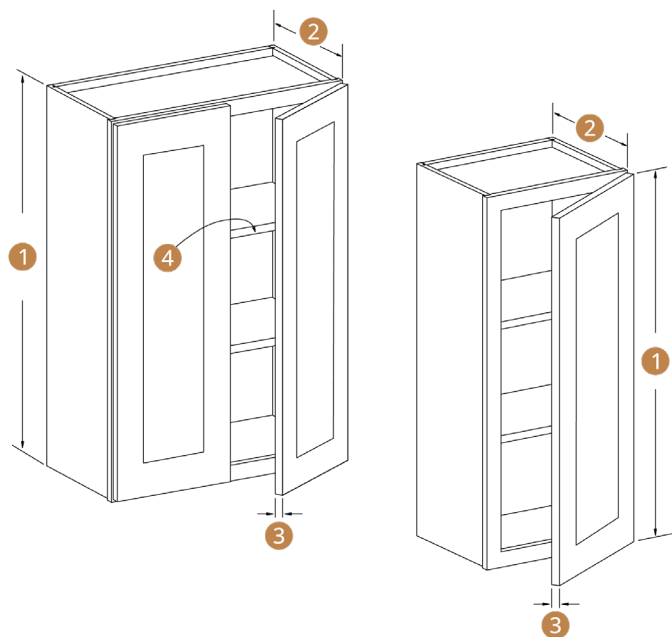
- 01 Standard 34-1/2"
- 02 Standard 4-1/2"
- 03 Standard 24"
- 04 Standard 6-2/3"
- 05 11-1/3"
- 06 11-1/3"
- 07 22-2/3"
- 08 3/4"
- 09 Standard 18" depth shelf



WALL CABINET

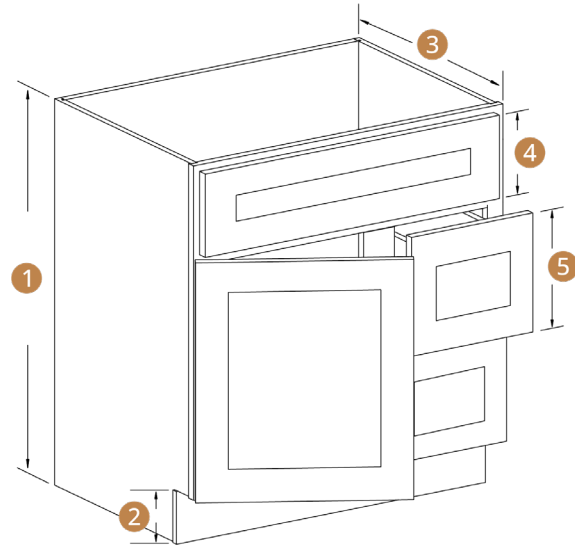
- 01 Standard wall cabinets 30", 36", 42"
- 02 Standard 12", For refrigerator top cabinet 27"
- 03 Standard 3/4"
- 04 Depth 10-2/3", thickness 3/4"

Note: 6 way adjustable hinge. Unscrew and switch the hinge side to change the door opening direction.



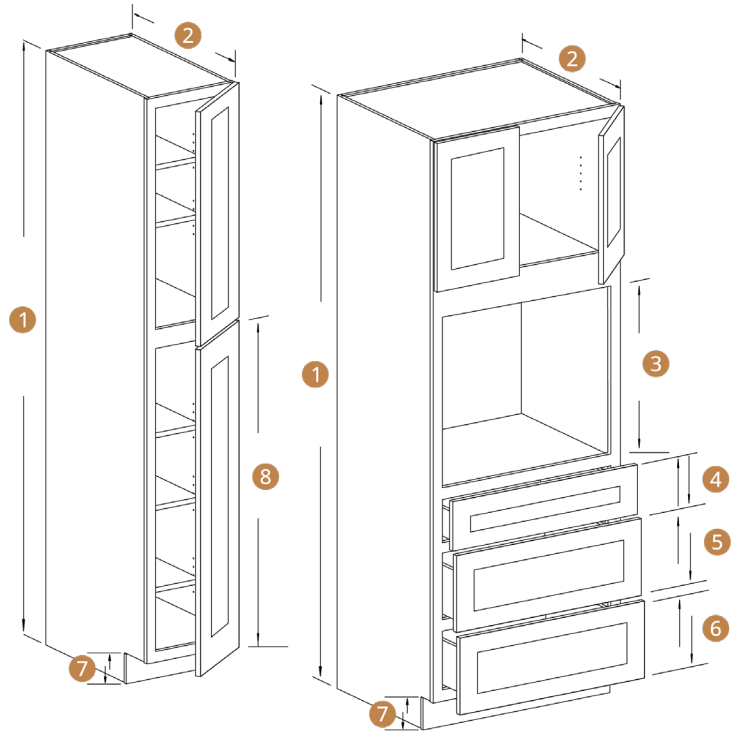
VANITY CABINET

- 01 Standard 34-1/2"
- 02 Standard 4-1/2"
- 03 Standard 21"
- 04 Standard 6-2/3"
- 05 11-1/3"



TALL CABINET

- 01 Standard 84", 90", 96"
- 02 Standard 27"
- 03 Opening 32-1/5"
- 04 6-2/3"
- 05 11-1/3"
- 06 11-1/3"
- 07 Standard 4-1/2"
- 08 49-1/2"



WARRANTY

Part 1: Coverage of Warranty

De-Valor International Co. Ltd. c.o.b. Woodworth Cabinetry ("Woodworth Cabinetry") is pleased to provide the following limited warranty on all kitchen cabinets and vanities bearing the brand name "Woodworth Cabinetry" (collectively, "cabinets") assembled and sold by Woodworth Cabinetry through its dealerships in the United States or Canada.

This warranty doesn't cover cabinets sold or shipped outside of the US or Canada. This limited warranty is subject to all limitations, exclusions, disclaimers and procedures set forth herein.

Woodworth Cabinetry warrants to the original purchasing consumer and any succeeding user to whom this warranty has been assigned that all cabinets purchased from Woodworth Cabinetry will be free from all unnatural defects in material and workmanship under normal residential use for a period of TWO (2) YEARS from the date of the original purchase from an authorized dealership of Woodworth Cabinetry.

Part 2: Exclusions

This warranty supersedes any and all previous warranties on Woodworth Cabinetry and constitutes the only and exclusive remedy in respect of Woodworth Cabinetry for all defects, damages and workmanship. There are no implied warranties extending beyond the terms of this warranty.

Woodworth Cabinetry shall not be liable for any natural wear and tear or any indirect, special, punitive, incidental or consequential costs, expenses or damages. This warranty gives you specific legal rights, and you may also have other rights, which vary from one jurisdiction to another. It is possible that one or more of the limitations and exclusions in this warranty may not apply to you.

Part 3: Limitations

This warranty shall become void if the cabinets, cabinetwork, drawer slides or hinges are modified from its original form, improperly installed or damaged prior to or during the installation, or used in any way other than for residential purposes. This warranty covers only parts and materials of the cabinets with the brand name, Woodworth Cabinetry.

This warranty does not cover any products used or installed in connection with cabinets, including without limitation, gas or electric appliances, countertops, or plumbing fixtures. This warranty does not apply to products installed at locations where year-round environmental or temperature controls are not maintained at the same levels as those of a normal household.

This warranty shall not apply to damages caused by transportation, storage, dirt, chemicals, exposure to moisture, humidity or excessive heat or cold, nor does it cover defects arising

from normal wear and tear, misuse, neglect, accidents, alterations, improper use or lack of proper maintenance, house settling, or acts of God. No installer, retailer, distributor, agent or employee of Woodworth Cabinetry has the authority to alter the obligations or limitations in this warranty.

Part 4: Disclaimers

The following is a brief recap of some of the characteristics of the wood and finishes on the cabinets you are about to purchase. Please read them carefully. If some of these characteristics concern you, please choose something else. We bring these characteristics to your attention so you will realize that Woodworth Cabinetry will not be held responsible for these variations in your cabinet. It is important to note that wood products claimed as defective are most often the result of atmospheric conditions such as excess moisture and humidity.

Woodworth Cabinetry strongly recommends testing the intended location of the products for such conditions prior to installation.

WOOD AND COLOR VARIATIONS:

Wood is a product of nature, and since no two trees are alike, cabinets may vary in color, texture and grain.

Wood characteristics naturally occurring such as variations in color, grain, mineral streaks, pinholes and knots are not considered defects. Color variations in cabinets are also a natural occurrence due to species, age or character of cabinets, or exposure to UV light and sunlight. For these reasons, new or replacement cabinets may not match display samples or existing cabinets. This may result in overall color variations, but is not considered a defect.

WOOD DOORS:

Wood by nature will undergo expansion and contraction movements year after year as it compensates and adjusts to ever changing atmospheric humidity and temperature conditions. It is very common for center panels on doors to shrink, expand or move during these transitions. Typically, the panel will return to its normal position within a year once it has adjusted to seasonal changes. It is for these same reasons that it is very common for doors to warp during these periods.

Doors that are warped up to 1/4" are not considered defective. Note: It is advisable to check if the door was properly installed, since doors that appear warped are very often the result of improper installation.

PAINTED FINISHES:

Birch is a non-porous, smooth grained wood. Additionally, wood by nature undergoes periods of expansion and contraction while it adjusts to atmospheric conditions mentioned above. As such, finish stress lines may become visible on painted cabinets especially at the joints. Any such occurrence is not considered a defect.

GLAZED FINISHES:

A glazed finish by character is an uneven finish. Some edges and profiles will have heavier hang up than others and glazing may vary from cabinet to cabinet, door to drawer and item to item. This may result in overall color variations but is not considered a defect.

Part 5: Warranty Performance

If a defect does occur within the terms and conditions of this warranty, such defective part will be repaired or replaced by Woodworth Cabinetry at its sole discretion. Woodworth Cabinetry will not provide or pay for the cost of removal of defective product, transportation of defective, repaired or replaced product or installation of repaired or replaced product.

Woodworth Cabinetry will not be responsible for any damages to the defective, replaced or repaired product occurred during its shipment or transportation. If any defective item has been discontinued or is not available at the time, Woodworth Cabinetry reserves the right to replace the item with the most similar item available in Woodworth Cabinetry's inventory at that time.

Woodworth Cabinetry cannot guarantee that the finish of any replacement will exactly match the finish and appearance of the defective item due to the natural aging process of wood and finishes of cabinets. Woodworth Cabinetry may require at its discretion that the customer submit a clear photo, or that a company representative view the item being claimed before honoring this warranty.

Part 6: Claims

To submit a claim covered under this warranty, the original proof of purchase and full payment or certified true copy thereof must be provided to the dealership from whom the purchaser had made the purchase. The dealer will contact you once your claim has been reviewed. Please do not deliver any items to Woodworth Cabinetry for the purpose of claiming this warranty. This warranty shall not cover any items delivered to Woodworth Cabinetry directly without going through a dealership.



MAINTENANCE & CARE

When our customers are looking to upgrade their home with beautiful new cabinetry, they are not only looking for designs and styles that complements their lifestyle, but they also want their new investment to stand the test of time. The kitchen is a busy place, so there are a few simple things you can do to protect your cabinetry and maintain their appearance.

Dust is unavoidable in any home, therefore it is important to dust and/or vacuum your cabinetry on a regular basis. When dusting, however, we recommend you used a cloth that is moistened with water or polish, and wipe following the natural grain of the wood, not against. Wiping against the grain may cause scratches should the dust contain grit.

In any kitchen, there is going to be residue, such as splattered food, oil, or smoke, from every day use. Residue should be wiped up with a damp cloth or a cloth containing a small amount of furniture polish. Cloths that are great for cleaning your cabinetry include clean dish towels, cheesecloth, or old t-shirts that are free from buttons or snaps that can cause scratches.

MORE DETAILS

01 Basic Cleaning:

1. Make sure the cloth that you are using to dust or wipe up stains or spills is soft, lint-free, and dampened with mild detergent, polish, or soap and warm water.
2. Don't clean against the grain, and for best results, use a "blotting" motion rather than a "wiping" motion.
3. If surfaces get wet, dry immediately with a soft, lint-free cloth.
4. If possible, avoid using a dish cloth or sponge, as detergent residue left over can harm finishes.
5. Avoid using ammonia-based cleaners and soaps with dye.

02 Basic Care

To ensure that your cabinetry not only stays with you during the many phases of life, but also remains timeless in its appearance, there are a few daily practises that you can do to help care for your cabinets long-term.

Caring for your new cabinetry doesn't have to be time-consuming. In fact, a little care can go a long way. That being said, being consistent and proactive is your best defense against time and "wear and tear" when it comes to your cabinets.

Just remember the three NO's:

1. No Spill Left Uncleaned
2. No Moisture & Heat
3. No Abrasives

| MAINTENANCE & CARE

03 Basic Care Tips

If You Spill It, Clean It

- If something is spilled, wipe it up promptly. Food spills, especially grease and oil, will come off much easier if removed right away. Water rings, spots, and spills need to be wiped up with a clean, lint-free cotton cloth to stop the moisture from leaking into the cabinetry.
- Use trays under potted plants, and check the areas around the sink, dishwasher, and any other appliance that uses water to operate to ensure there are no leaks and water is not drying on the cabinetry.

Say No to Moisture & Heat

- Avoid keeping damp dish towels or dishcloths on or over doors of the base of the cabinets for any length of time.
- Avoid using appliances that produces heat or steam, such as a tea kettle, that is directed toward any cabinetry surface.
- If you are resting something down that is hot, put a hot pad down first for protection.

Goodbye Abrasives

- Using scouring pads, steel wool, wire brushes, and powdered cleaners is the fastest way to scratch your new cabinetry.
- Oven cleaner is also extremely damaging, so avoid letting it touch any part of your cabinets.
- Do not slide anything across the surface of your cabinets.
- Use a cutting board when using knives or other sharp objects.
- When in doubt, DON'T! Harsh cleaning chemicals will not only destroy the finish, but also penetrate the surface to allow moisture and food inside.

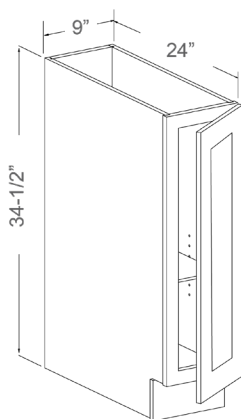
04 Cleaning of Glass Door Inserts:

- For more delicate parts of your cabinets, such as glass door inserts, use a household glass cleaner with a soft, clean cloth.
- Apply the solution to the cloth rather than on the glass to avoid excess glass cleaner dripping down into the cabinet joints.
- Never use full strength ammonia. Always dilute.

BASE CABINETS



BASE CABINET WITH A FULL HEIGHT DOOR



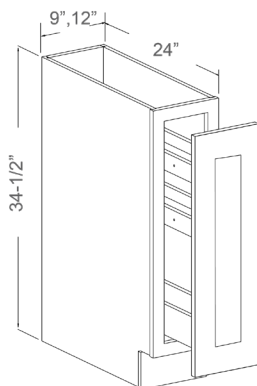
Features

- 1 Doors
- 1 Adjustable Shelf

General Info

Item Code	Dimension (WxHxD)	Weight
B09FD	9 x 34-1/2 x 24 Inch	19 KG

SPICE PULL-OUT BASE CABINET



Features

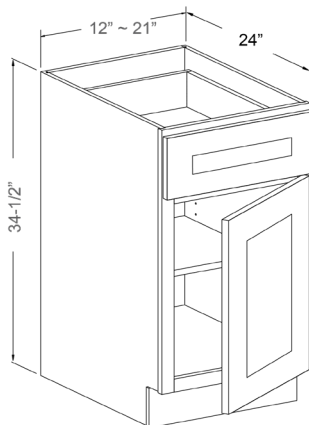
- 1 Door
- 3 Fixed Pull-Out Shelves

General Info

Item Code	Dimension (WxHxD)	Weight
B09SR	9 x 34-1/2 x 24 Inch	19 KG
B12SR	12 x 34-1/2 x 24 Inch	21 KG

Notes: Soft close ball bearing side glides

BASE CABINET WITH 1 DRAWER & 1 DOOR



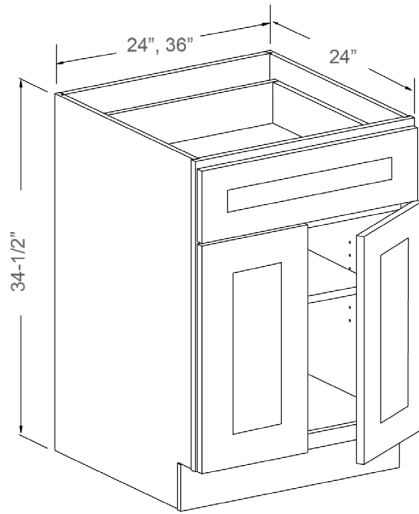
Features

- 1 Drawer
- 1 Doors
- 1 Adjustable Shelf

General Info

Item Code	Dimension (WxHxD)	Weight
B12	12 x 34-1/2 x 24 Inch	20 KG
B15	15 x 34-1/2 x 24 Inch	22 KG
B18	18 x 34-1/2 x 24 Inch	24 KG
B21	21 x 34-1/2 x 24 Inch	25 KG

BASE CABINET WITH 1 DRAWER & 2 DOORS



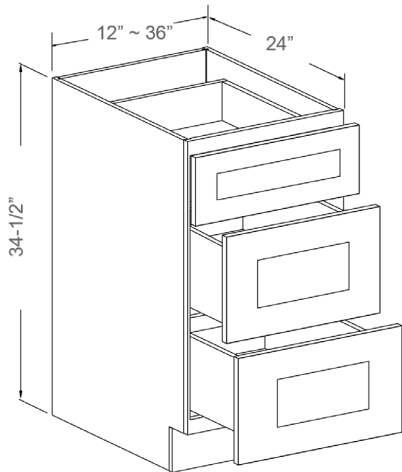
Features

- 1 Drawer
- 2 Doors
- 1 Adjustable Shelf

General Info

Item Code	Dimension (WxHxD)	Weight
B24	24 x 34-1/2 x 24 Inch	28 KG
B27	27 x 34-1/2 x 24 Inch	31 KG
B30	30 x 34-1/2 x 24 Inch	33 KG
B33	33x 34-1/2 x 24 Inch	35 KG
B36	36x 34-1/2 x 24 Inch	37 KG

DRAWER BASE WITH 3 DRAWERS



Features

- 3 Drawers
- No Shelf

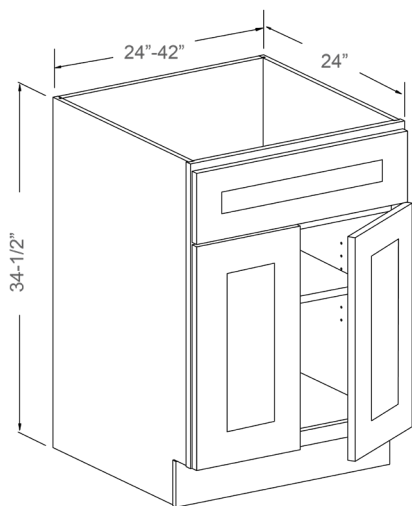
General Info

Item Code	Dimension (WxHxD)	Weight
DB12(3D)	12 x 34-1/2 x 24 Inch	31 KG
DB15(3D)	15 x 34-1/2 x 24 Inch	34 KG
DB18(3D)	18 x 34-1/2 x 24 Inch	37 KG
DB21(3D)	21 x 34-1/2 x 24 Inch	39 KG
DB24(3D)	24 x 34-1/2 x 24 Inch	42 KG
DB27(3D)	27 x 34-1/2 x 24 Inch	45 KG
DB30(3D)	30 x 34-1/2 x 24 Inch	48 KG
DB33(3D)	33 x 34-1/2 x 24 Inch	51 KG
DB36(3D)	36 x 34-1/2 x 24 Inch	54 KG

Description

1 Standard Drawer and 2 Deep Drawers with Solid Wood Drawer Box

SINK BASE WITH 2 DOORS



* Back Panel Open

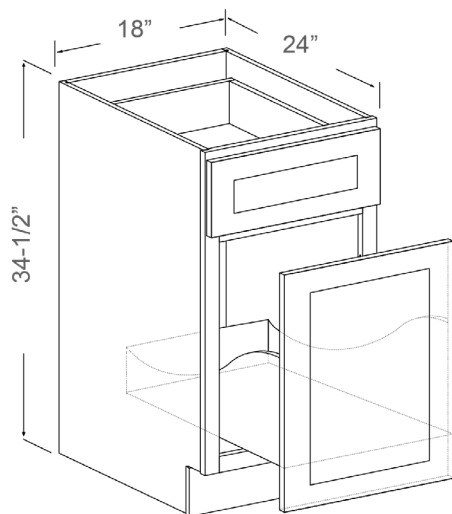
Features

- 1 False Drawer Fixed to Frame
- 2 Doors
- No Shelf

General Info

Item Code	Dimension (WxHxD)	Weight
SB24	24 x 34-1/2 x 24 Inch	20 KG
SB27	27 x 34-1/2 x 24 Inch	21 KG
SB30	30 x 34-1/2 x 24 Inch	22 KG
SB33	33 x 34-1/2 x 24 Inch	23 KG
SB36	36 x 34-1/2 x 24 Inch	24 KG
SB42	42 x 34-1/2 x 24 Inch	26 KG

WASTE BIN BASE CABINET



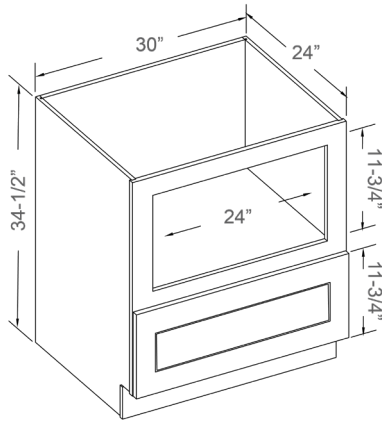
Features

- 1 Standard Drawer with Solid Wood Drawer Box
- 1 Door
- 2 Large Bin Cut-Outs with 2 Plastic Waste Bins

General Info

Item Code	Dimension (WxHxD)	Weight
BWB18	18 x 34-1/2 x 24 Inch	29 KG

MICROWAVE DRAWER BASE



Features

1 Bottom Drawer with Solid Wood Drawer Box

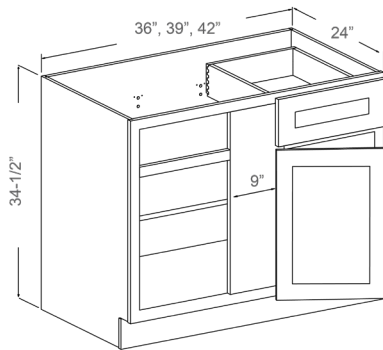
General Info

Item Code	Dimension (WxHxD)	Weight
BMC30	30 x 34-1/2 x 24 Inch	31 KG

Description

For Built-In Microwaves not Countertop Microwaves

BASE BLIND CORNER



* Minimum 3" Pull From The Wall When Install.

Features

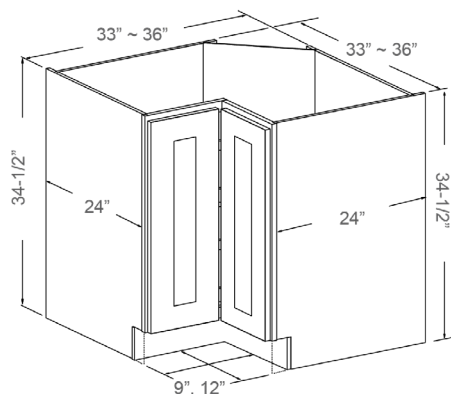
1 Drawer(15") & 1 Door on Left or Right

1 Adjustable Shelf

General Info

Item Code	Dimension (WxHxD)	Weight
BBC36(L/R)	36 x 34-1/2 x 24 Inch	31 KG
BBC39(L/R)	39 x 34-1/2 x 24 Inch	33 KG
BBC42(L/R)	42 x 34-1/2 x 24 Inch	35 KG

LAZY SUSAN



Features

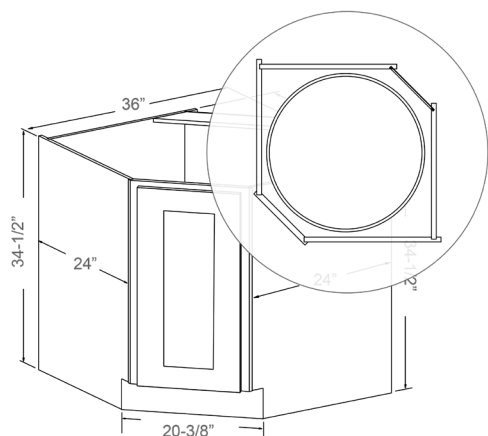
1 Bi-folding Door

2 Wooden Kidney-Shaped Susans

General Info

Item Code	Dimension (WxHxD)	Weight
LSB33(L/R)	33 x 34-1/2 x 24 Inch	35 KG
LSB36(L/R)	36 x 34-1/2 x 24 Inch	37 KG

BASE DIAGONAL CORNER



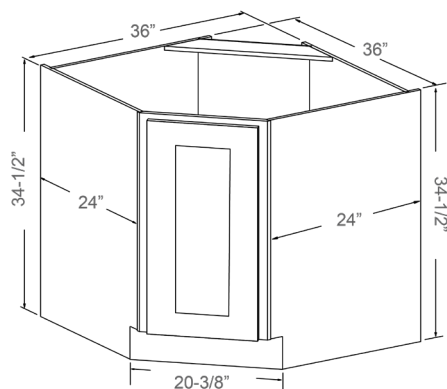
Features

- 1 Full Door
- 2 Wooden Round Susans

General Info

Item Code	Dimension (WxHxD)	Weight
BDC36	36 x 34-1/2 x 24 Inch	36 KG

BASE DIAGONAL SINK



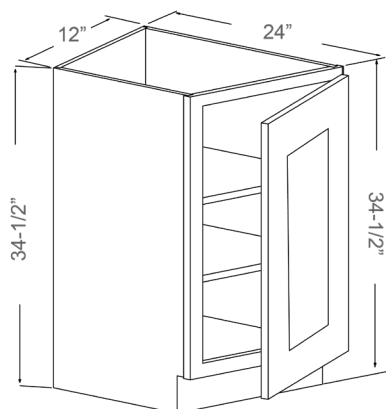
Features

- 1 Full Door
- No Shelf

General Info

Item Code	Dimension (WxHxD)	Weight
BDS36	36 x 34-1/2 x 24 Inch	28 KG

BASE TRANSITIONAL (L/R)



Features

- 1 Full Door
- 2 Adjustable Wood Shelves

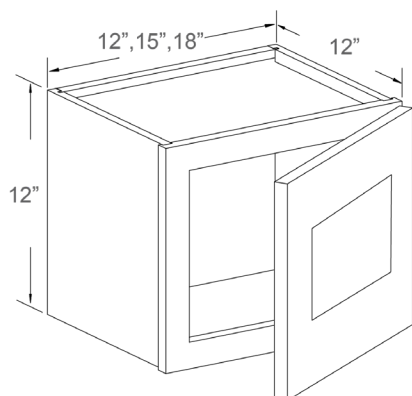
General Info

Item Code	Dimension (WxHxD)	Weight
BTL12	12 x 34-1/2 x 24 Inch	19 KG
BTR12	12 x 34-1/2 x 24 Inch	19 KG

WALL CABINETS



WALL CABINET 12"H WITH 1 DOOR



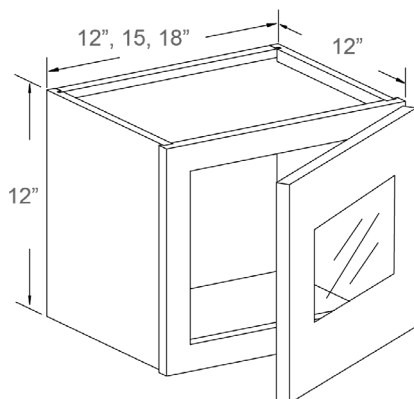
Features

- 1 Door
- No Shelf

General Info

Item Code	Dimension (WxHxD)	Weight
W1212	12 x 12 x 12 Inch	4.3 KG
W1512	15 x 12 x 12 Inch	5.2 KG
W1812	18 x 12 x 12 Inch	5.5 KG

WALL CABINET 12"H WITH GLASS INSERT DOOR



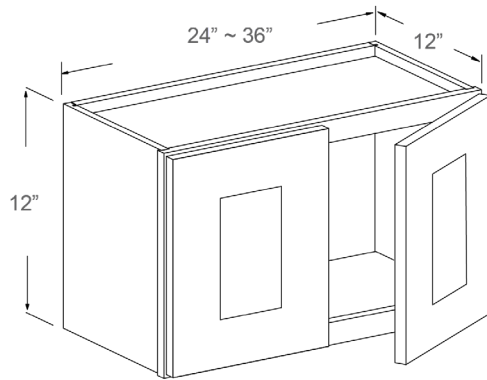
Features

- 1 Glass Insert Door
- No Shelf
- Matching Color Interior

General Info

Item Code	Dimension (WxHxD)	Weight
GDW1212	12 x 12 x 12 Inch	4.5 KG
GDW1512	15 x 12 x 12 Inch	5.4 KG
GDW1812	18 x 12 x 12 Inch	5.8 KG

WALL CABINET 12"H WITH 2 DOORS



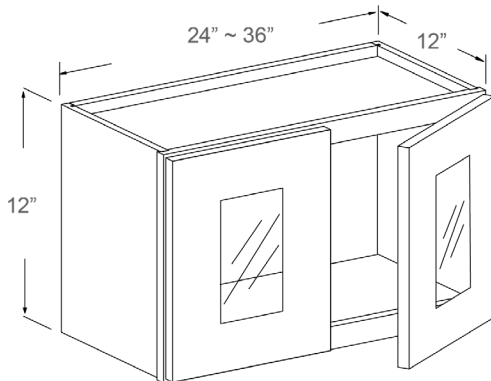
Features

2 Doors
No Shelf

General Info

Item Code	Dimension (WxHxD)	Weight
W2412	24 x 12 x 12 Inch	7.3 KG
W2712	27 x 12 x 12 Inch	8.2 KG
W3012	30 x 12 x 12 Inch	9.2 KG
W3312	33 x 12 x 12 Inch	10 KG
W3612	36 x 12 x 12 Inch	10.5 KG

WALL CABINET 12"H WITH 2 GLASS INSERT DOORS



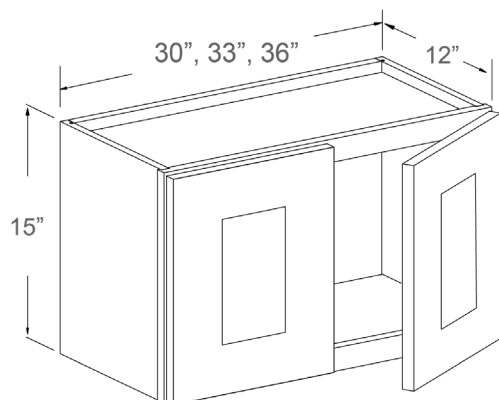
Features

2 Glass Insert Doors
No Shelf
Matching Color Interior

General Info

Item Code	Dimension (WxHxD)	Weight
GDW2412	24 x 12 x 12 Inch	7.7 KG
GDW2712	27 x 12 x 12 Inch	8.6 KG
GDW3012	30 x 12 x 12 Inch	9.5 KG
GDW3312	33 x 12 x 12 Inch	10 KG
GDW3612	36 x 12 x 12 Inch	11 KG

WALL CABINET 15"H WITH 2 DOORS



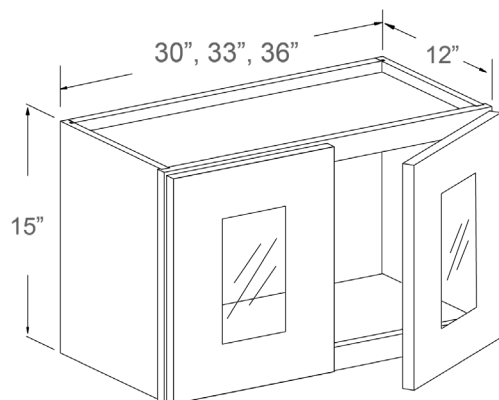
Features

2 Doors
No Shelf

General Info

Item Code	Dimension (WxHxD)	Weight
W3015	30 x 15 x 12 Inch	10 KG
W3315	33 x 15 x 12 Inch	11 KG
W3615	36 x 15 x 12 Inch	12 KG

WALL CABINET 15"H WITH 2 GLASS INSERT DOORS



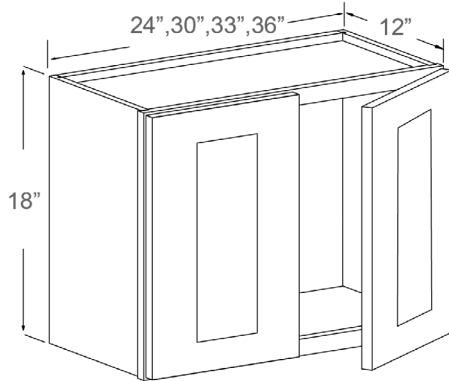
Features

2 Glass Insert Doors
No Shelf
Matching Color Interior

General Info

Item Code	Dimension (WxHxD)	Weight
GDW3015	30 x 15 x 12 Inch	10.5 KG
GDW3315	33 x 15 x 12 Inch	11 KG
GDW3615	36 x 15 x 12 Inch	11.5 KG

WALL CABINET 18"H WITH 2 DOORS



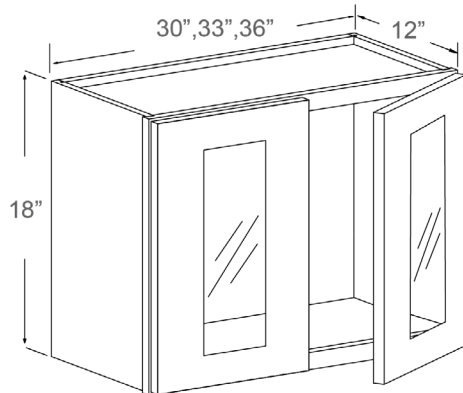
Features

2 Doors
No Shelf

General Info

Item Code	Dimension (WxHxD)	Weight
W2418	24 x 18 x 12 Inch	10.6 KG
W3018	30 x 18 x 12 Inch	11.7 KG
W3318	33 x 18 x 12 Inch	12.8 KG
W3618	36 x 18 x 12 Inch	13.7 KG

WALL CABINET 18"H WITH 2 GLASS INSERT DOORS



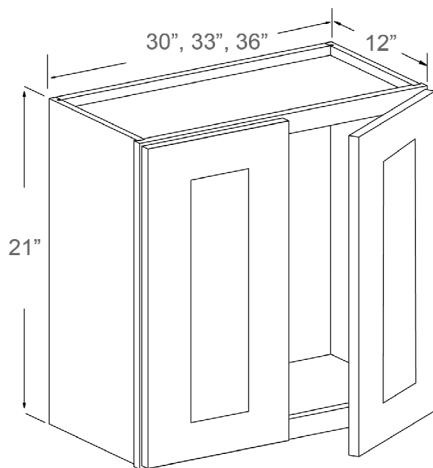
Features

2 Glass Insert Doors
No Shelf
Matching Color Interior

General Info

Item Code	Dimension (WxHxD)	Weight
GDW3018	30 x 18 x 12 Inch	12 KG
GDW3318	33 x 18 x 12 Inch	13 KG
GDW3618	36 x 18 x 12 Inch	14 KG

WALL CABINET 21"H WITH 2 DOORS



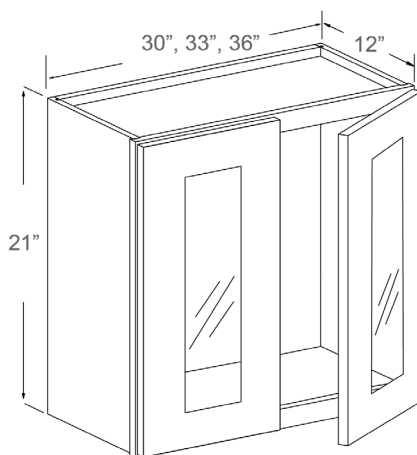
Features

2 Doors
No Shelf

General Info

Item Code	Dimension (WxHxD)	Weight
W3021	30 x 21 x 12 Inch	13 KG
W3321	33 x 21 x 12 Inch	14 KG
W3621	36 x 21 x 12 Inch	15 KG

WALL CABINET 21"H WITH 2 GLASS INSERT DOORS



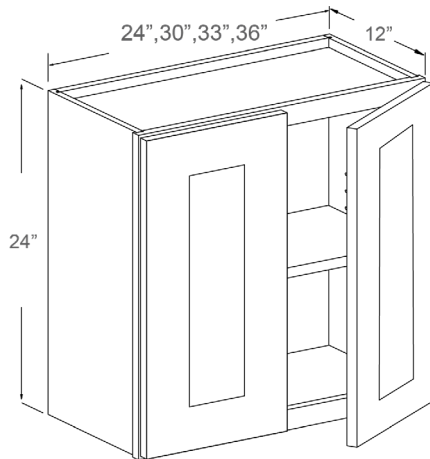
Features

2 Glass Insert Doors
No Shelf
Matching Color Interior

General Info

Item Code	Dimension (WxHxD)	Weight
GDW3021	30 x 21 x 12 Inch	13.4 KG
GDW3321	33 x 21 x 12 Inch	14.4 KG
GDW3621	36 x 21 x 12 Inch	15.4 KG

WALL CABINET 24"H WITH 2 DOORS



Features

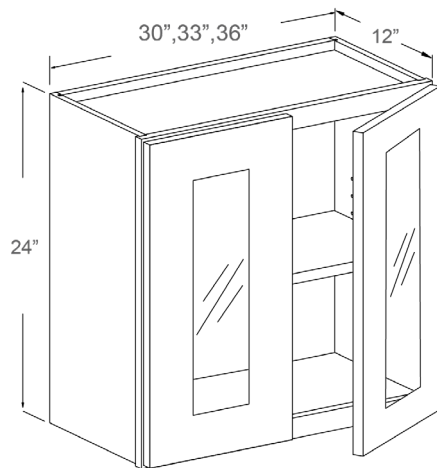
2 Doors

1 Adjustable Wood Shelf

General Info

Item Code	Dimension (WxHxD)	Weight
W2424	24 x 24 x 12 Inch	14.8 KG
W3024	30 x 24 x 12 Inch	16 KG
W3324	33 x 24 x 12 Inch	17 KG
W3624	36 x 24 x 12 Inch	18.5 KG

WALL CABINET 24"H WITH 2 GLASS INSERT DOORS



Features

2 Glass Insert Doors

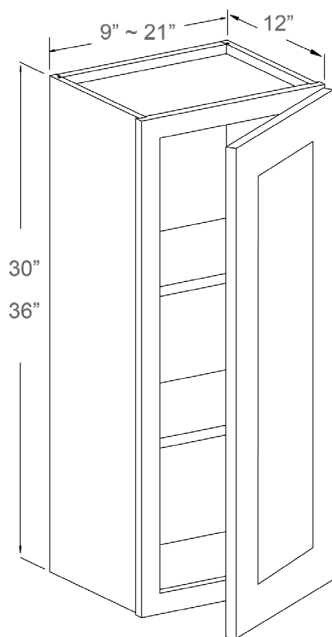
1 Adjustable Wood Shelf

Matching Color Interior

General Info

Item Code	Dimension (WxHxD)	Weight
CDW3024	30 x 24 x 12 Inch	16.4 KG
CDW3324	33 x 24 x 12 Inch	17.4 KG
CDW3624	36 x 24 x 12 Inch	19 KG

WALL CABINET 30"H & 36"H



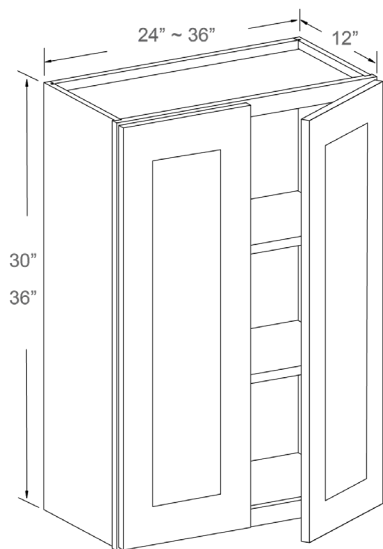
Features

- 1 Door
- 2 Adjustable Wood Shelves

General Info

Item Code	Dimension (WxHxD)	Weight
W0930	9 x 30 x 12 Inch	9 KG
W1230	12 x 30 x 12 Inch	10 KG
W1530	15 x 30 x 12 Inch	12 KG
W1830	18 x 30 x 12 Inch	13.5 KG
W2130	21 x 30 x 12 Inch	14.5 KG
W0936	9 x 36 x 12 Inch	10 KG
W1236	12 x 36 x 12 Inch	12 KG
W1536	15 x 36 x 12 Inch	13 KG
W1836	18 x 36 x 12 Inch	15 KG
W2136	21 x 36 x 12 Inch	17 KG

WALL CABINET 30"H & 36"H



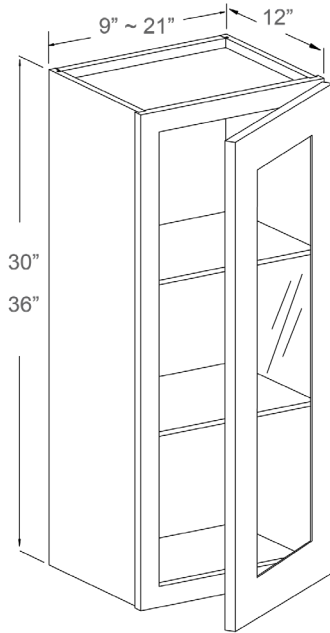
Features

- 2 Doors
- 2 Adjustable Wood Shelves

General Info

Item Code	Dimension (WxHxD)	Weight
W2430	24 x 30 x 12 Inch	17 KG
W2730	27 x 30 x 12 Inch	19 KG
W3030	30 x 30 x 12 Inch	21 KG
W3330	33 x 30 x 12 Inch	22.5 KG
W3630	36 x 30 x 12 Inch	23.5 KG
W2436	24 x 36 x 12 Inch	19.5 KG
W2736	27 x 36 x 12 Inch	20.5 KG
W3036	30 x 36 x 12 Inch	23 KG
W3336	33 x 36 x 12 Inch	25 KG
W3636	36 x 36 x 12 Inch	27 KG

WALL CABINET 30"H & 36"H - GLASS INSERT DOOR



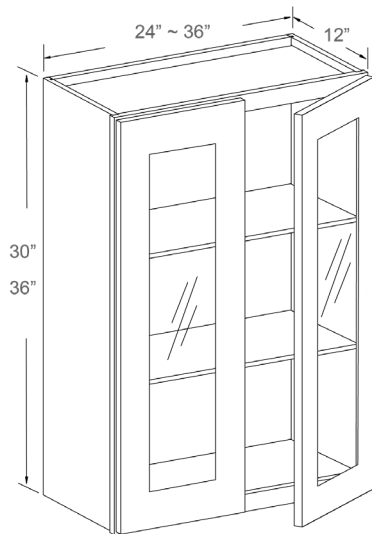
Features

- 1 Glass Insert Door
- 2 Adjustable Wood Shelves
- Matching Color Interior

General Info

Item Code	Dimension (WxHxD)	Weight
GDW0930	9 x 30 x 12 Inch	10 KG
GDW1230	12 x 30 x 12 Inch	11 KG
GDW1530	15 x 30 x 12 Inch	13 KG
GDW1830	18 x 30 x 12 Inch	14.5 KG
GDW2130	21 x 30 x 12 Inch	15.5 KG
GDW0936	9 x 36 x 12 Inch	11 KG
GDW1236	12 x 36 x 12 Inch	13 KG
GDW1536	15 x 36 x 12 Inch	14 KG
GDW1836	18 x 36 x 12 Inch	16 KG
GDW2136	21 x 36 x 12 Inch	18 KG

WALL CABINET 30"H & 36"H - GLASS INSERT DOOR



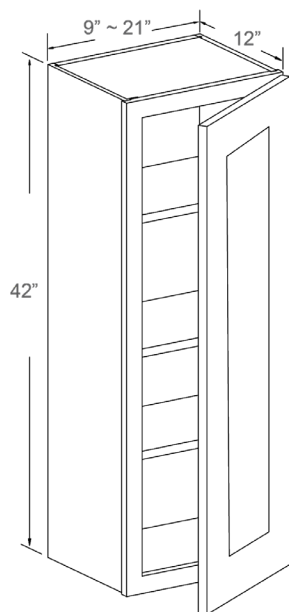
Features

- 2 Glass Insert Doors
- 2 Adjustable Wood Shelves
- Matching Color Interior

General Info

Item Code	Dimension (WxHxD)	Weight
GDW2430	24 x 30 x 12 Inch	18 KG
GDW2730	27 x 30 x 12 Inch	20 KG
GDW3030	30 x 30 x 12 Inch	22 KG
GDW3330	33 x 30 x 12 Inch	23.5 KG
GDW3630	36 x 30 x 12 Inch	24.5 KG
GDW2436	24 x 36 x 12 Inch	20.5 KG
GDW2736	27 x 36 x 12 Inch	21.5 KG
GDW3036	30 x 36 x 12 Inch	24 KG
GDW3336	33 x 36 x 12 Inch	26 KG
GDW3636	36 x 36 x 12 Inch	28 KG

WALL CABINET 42"H



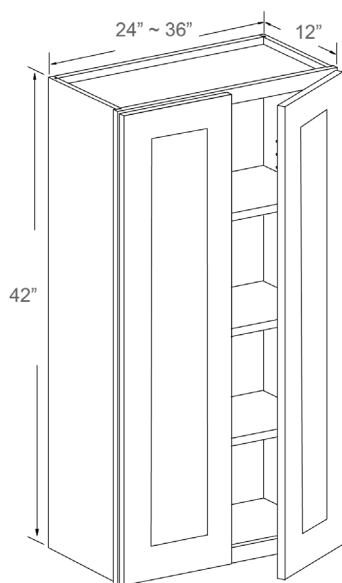
Features

- 1 Door
- 3 Adjustable Wood Shelves

General Info

Item Code	Dimension (WxHxD)	Weight
W0942	9 x 42 x 12 Inch	12 KG
W1242	12 x 42 x 12 Inch	14 KG
W1542	15 x 42 x 12 Inch	15.5 KG
W1842	18 x 42 x 12 Inch	18 KG
W2142	21 x 42 x 12 Inch	19.5 KG

WALL CABINET 42"H



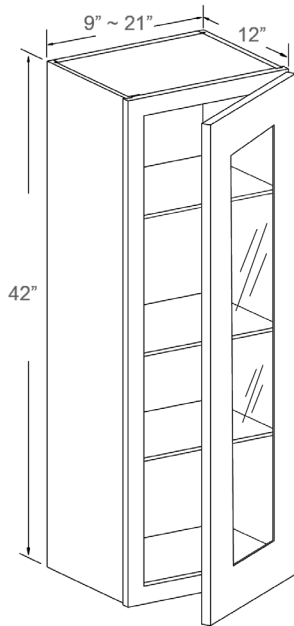
Features

- 2 Doors
- 3 Adjustable Wood Shelves

General Info

Item Code	Dimension (WxHxD)	Weight
W2442	24 x 42 x 12 Inch	22 KG
W2742	27 x 42 x 12 Inch	25 KG
W3042	30 x 42 x 12 Inch	27 KG
W3342	33 x 42 x 12 Inch	29 KG
W3642	36 x 42 x 12 Inch	31 KG

WALL CABINET 42"H - GLASS INSERT DOOR



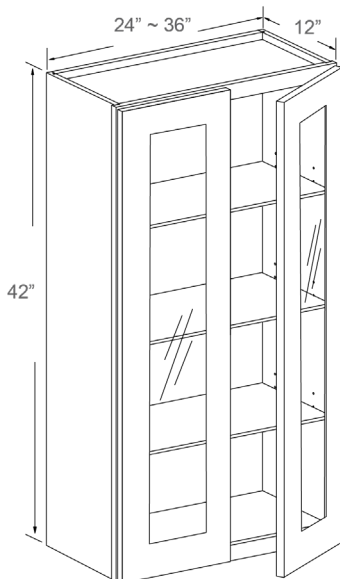
Features

- 1 Glass Insert Door
- 3 Adjustable Wood Shelves
- Matching Color Interior

General Info

Item Code	Dimension (WxHxD)	Weight
GDW0942	9 x 42 x 12 Inch	12.6 KG
GDW1242	12 x 42 x 12 Inch	14.8 KG
GDW1542	15 x 42 x 12 Inch	16.4 KG
GDW1842	18 x 42 x 12 Inch	18.8 KG
GDW2142	21 x 42 x 12 Inch	21 KG

WALL CABINET 42"H - GLASS INSERT DOOR



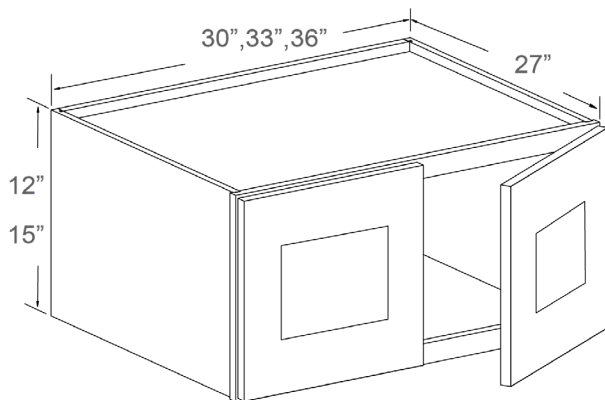
Features

- 2 Glass Insert Doors
- 3 Adjustable Wood Shelves
- Matching Color Interior

General Info

Item Code	Dimension (WxHxD)	Weight
GDW2442	24 x 42 x 12 Inch	23 KG
GDW2742	27 x 42 x 12 Inch	26.2 KG
GDW3042	30 x 42 x 12 Inch	29 KG
GDW3342	33 x 42 x 12 Inch	31 KG
GDW3642	36 x 42 x 12 Inch	32.4 KG

REFRIGERATOR WALL CABINET 12"H & 15"H



Features

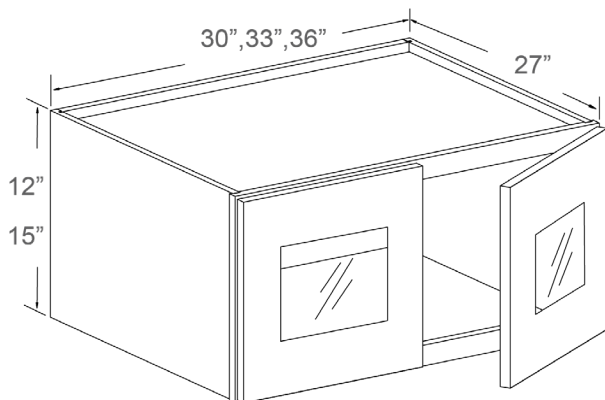
2 Doors

No Shelf

General Info

Item Code	Dimension (WxHxD)	Weight
W301227	30 x 12 x 27Inch	14 KG
W331227	33 x 12 x 27 Inch	16 KG
W361227	36 x 12 x 27 Inch	18 KG
W301527	30 x 15 x 27Inch	16 KG
W331527	33 x 15 x 27 Inch	18 KG
W361527	36 x 15 x 27 Inch	20.4 KG

REFRIGERATOR WALL CABINET 12"H & 15"H



Features

2 Glass Insert Doors

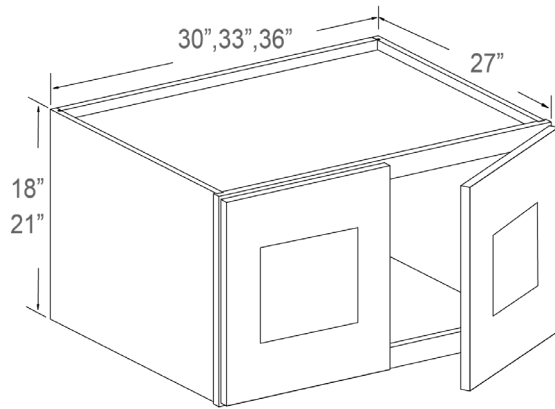
No Shelf

Matching Color Interior

General Info

Item Code	Dimension (WxHxD)	Weight
GDW301227	30 x 12 x 27Inch	14.8 KG
GDW331227	33 x 12 x 27 Inch	17 KG
GDW361227	36 x 12 x 27 Inch	19.6 KG
GDW301527	30 x 15 x 27Inch	16.8 KG
GDW331527	33 x 15 x 27 Inch	19 KG
GDW361527	36 x 15 x 27 Inch	21.2 KG

REFRIGERATOR WALL CABINET 18"H & 21"H



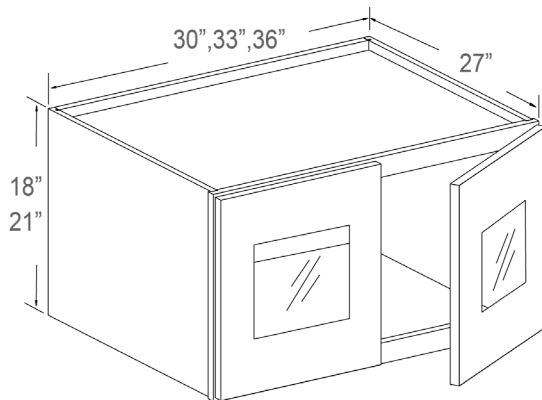
Features

- 2 Doors
- No Shelf

General Info

Item Code	Dimension (WxHxD)	Weight
W301827	30 x 18 x 27Inch	14.6 KG
W331827	33 x 18 x 27 Inch	16.8 KG
W361827	36 x 18 x 27 Inch	19 KG
W302127	30 x 21 x 27Inch	16.6 KG
W332127	33 x 21 x 27 Inch	18.9 KG
W362127	36 x 21 x 27 Inch	21 KG

REFRIGERATOR WALL CABINET 18"H & 21"H



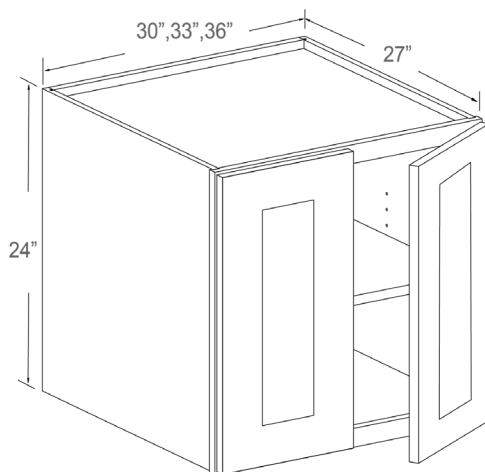
Features

- 2 Glass Insert Doors
- No Shelf
- Matching Color Interior

General Info

Item Code	Dimension (WxHxD)	Weight
GDW301827	30 x 18 x 27Inch	15 KG
GDW331827	33 x 18 x 27 Inch	17 KG
GDW361827	36 x 18 x 27 Inch	19 KG
GDW302127	30 x 21 x 27Inch	16.8 KG
GDW332127	33 x 21 x 27 Inch	19 KG
GDW362127	36 x 21 x 27 Inch	21 KG

REFRIGERATOR WALL CABINET 24"H



Features

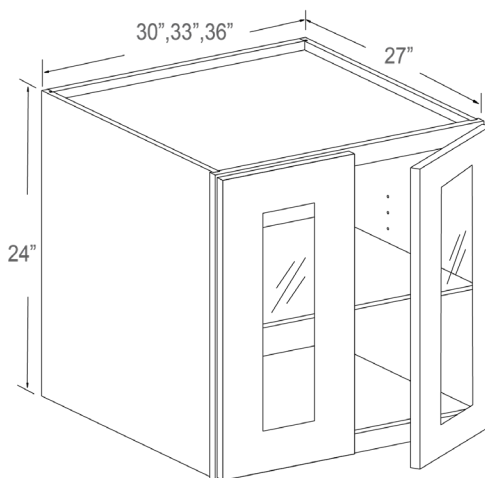
2 Doors

1 Adjustable Wood Shelf

General Info

Item Code	Dimension (WxHxD)	Weight
W302427	30 x 24 x 27Inch	16 KG
W332427	33 x 24 x 27 Inch	18 KG
W362427	36 x 24 x 27 Inch	21 KG

REFRIGERATOR WALL CABINET 24"H



Features

2 Glass Insert Doors

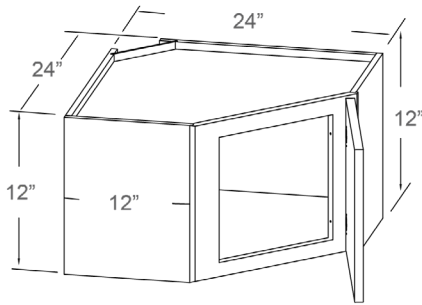
1 Adjustable Wood Shelf

Matching Color Interior

General Info

Item Code	Dimension (WxHxD)	Weight
GDW302427	30 x 24 x 27Inch	16.5 KG
GDW332427	33 x 24 x 27 Inch	18.2 KG
GDW362427	36 x 24 x 27 Inch	21.4 KG

WALL DIAGONAL CORNER 12"H



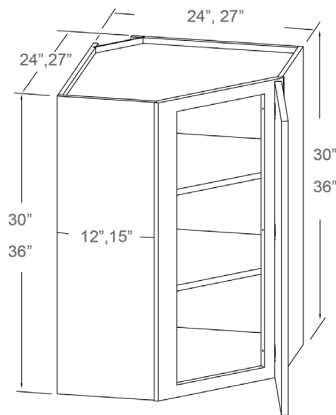
Features

- 1 Door
- No Shelf

General Info

Item Code	Dimension (WxHxD)	Weight
WDC2412	24 x 12 x 12 Inch	14 KG

WALL DIAGONAL CORNER 30"H & 36"H



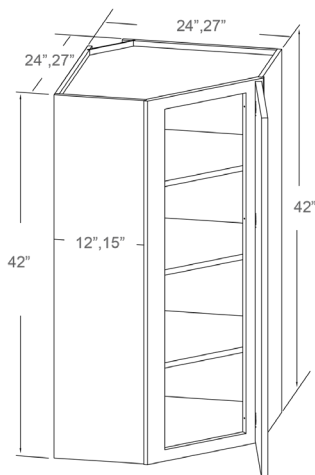
Features

- 1 Door
- 2 Adjustable Wood Shelves

General Info

Item Code	Dimension (WxHxD)	Weight
WDC2430	24 x 30 x 12 Inch	25 KG
WDC2436	24 x 36 x 12 Inch	28 KG
WDC273615	27 x 36 x 15 Inch	33.6 KG

WALL DIAGONAL CORNER 42"H



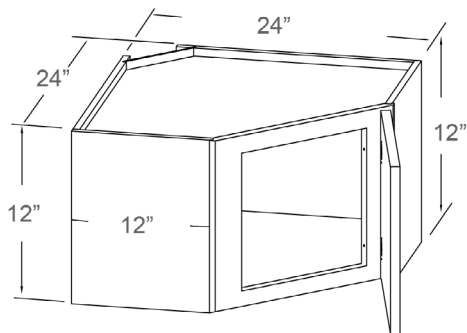
Features

- 1 Door
- 3 Adjustable Wood Shelves

General Info

Item Code	Dimension (WxHxD)	Weight
WDC2442	24 x 42 x 12 Inch	32 KG
WDC274215	27 x 42 x 15 Inch	40 KG

WALL DIAGONAL CORNER 12"H



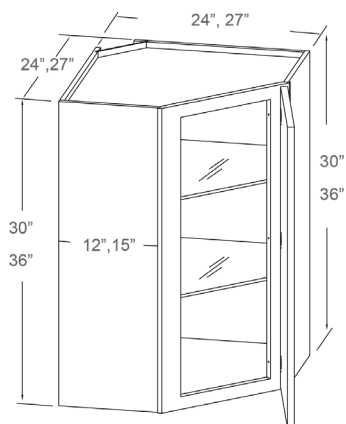
Features

- 1 Glass Insert Door
- No Shelf
- Matching Color Interior

General Info

Item Code	Dimension (WxHxD)	Weight
GDWDC2412	24 x 12 x 12 Inch	14.3 KG

WALL DIAGONAL CORNER 30"H & 36"H



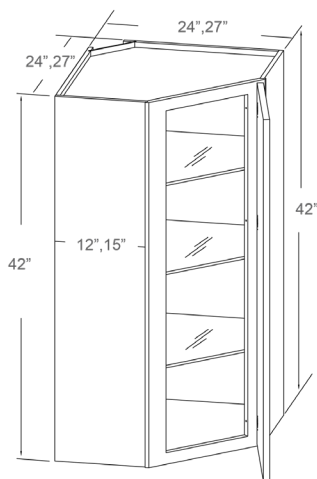
Features

- 1 Glass Insert Door
- 2 Adjustable Wood Shelves
- Matching Color Interior

General Info

Item Code	Dimension (WxHxD)	Weight
GDWDC2430	24 x 30 x 12 Inch	26.3 KG
GDWDC2436	24 x 36 x 12 Inch	29.4 KG
GDWDC273615	27 x 36 x 15 Inch	35 KG

WALL DIAGONAL CORNER 42"H



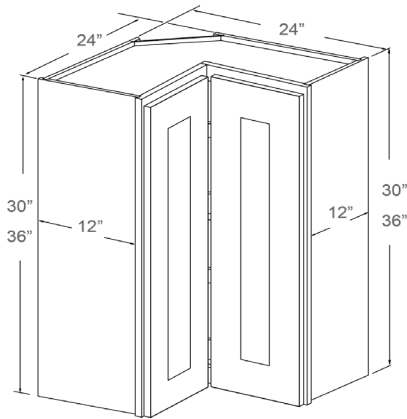
Features

- 1 Glass Insert Door
- 3 Adjustable Wood Shelves
- Matching Color Interior

General Info

Item Code	Dimension (WxHxD)	Weight
GDWDC2442	24 x 42 x 12 Inch	34.2 KG
GDWDC274215	27 x 42 x 15 Inch	42.1 KG

WALL PIE CUT CORNER CABINET 30"H & 36"H



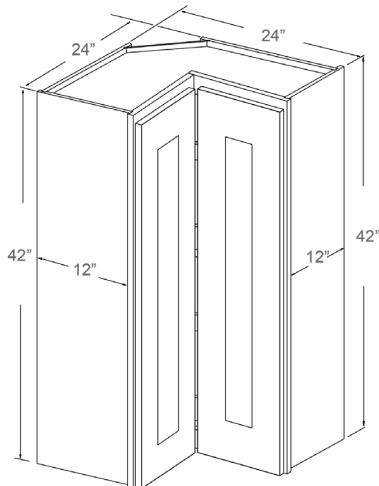
Features

- 1 Bi-folding Door
- 2 Adjustable Wood Shelves

General Info

Item Code	Dimension (WxHxD)	Weight
WPC2430	24 x 30 x 12 Inch	25.4 KG
WPC2436	24 x 36 x 12 Inch	28.7 KG

WALL PIE CUT CORNER CABINET 42"H



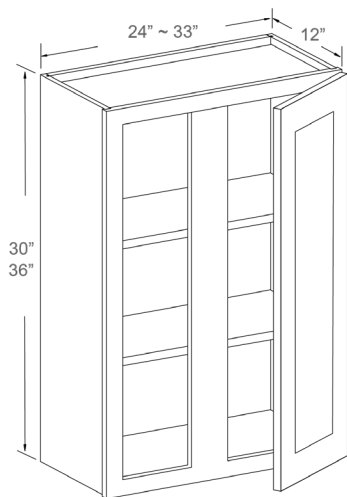
Features

- 1 Bi-folding Door
- 3 Adjustable Wood Shelves

General Info

Item Code	Dimension (WxHxD)	Weight
WPC2442	24 x 42 x 12 Inch	32.8 KG

WALL BLIND CORNER 30"H & 36"H



Description

Door width from 9" W to 21" W. Fillers are recommended for inside return but not included.

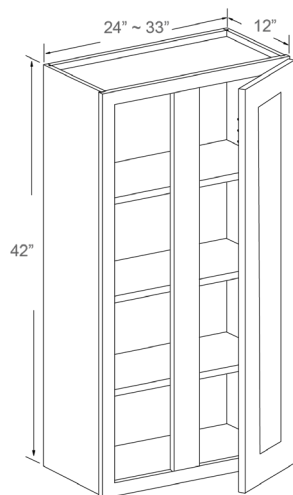
Features

- 1 Door
- 2 Adjustable Wood Shelves

General Info

Item Code	Dimension (WxHxD)	Weight
WBC2430	24 x 30 x 12 Inch	17 KG
WBC2730	27 x 30 x 12 Inch	19 KG
WBC3030	30 x 30 x 12 Inch	20 KG
WBC3330	33 x 30 x 12 Inch	22 KG
WBC2436	24 x 36 x 12 Inch	19 KG
WBC2736	27 x 36 x 12 Inch	20 KG
WBC3036	30 x 36 x 12 Inch	23 KG
WBC3336	33 x 36 x 12 Inch	24.6 KG

WALL BLIND CORNER 42"H



Description

Door width from 9" W to 21" W. Fillers are recommended for inside return but not included.

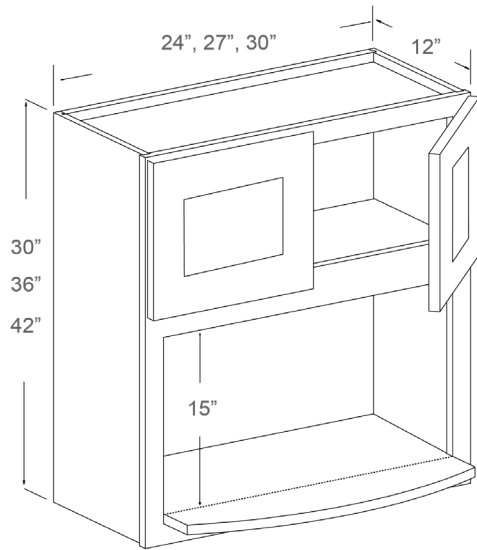
Features

- 1 Door
- 3 Adjustable Wood Shelves

General Info

Item Code	Dimension (WxHxD)	Weight
WBC2442	24 x 42 x 12 Inch	22 KG
WBC2742	27 x 42 x 12 Inch	25 KG
WBC3042	30 x 42 x 12 Inch	27 KG
WBC3342	33 x 42 x 12 Inch	28.4 KG

WALL MICROWAVE CABINET 30"H & 36"H & 42"H



Description

3/4" x 15" deep removable shelf for microwave to sit on with 15" H opening.

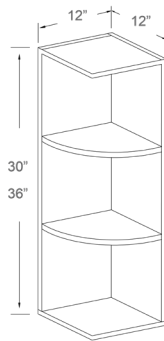
Features

2 Doors
Matching Color Finish

General Info

Item Code	Dimension (WxHxD)	Weight
WMO2430	24 x 30 x 15 1/2 Inch	13 KG
WMO2730	27 x 30 x 15 1/2 Inch	16.5 KG
WMO3030	30 x 30 x 15 1/2 Inch	19 KG
WMO2436	24 x 36 x 15 1/2 Inch	15 KG
WMO2736	27 x 36 x 15 1/2 Inch	18 KG
WMO3036	30 x 36 x 15 1/2 Inch	21 KG
WMO2442	24 x 42 x 15 1/2 Inch	17.5 KG
WMO2742	27 x 42 x 15 1/2 Inch	20 KG
WMO3042	30 x 42 x 15 1/2 Inch	23 KG

WALL END SHELF 30"H & 36"H



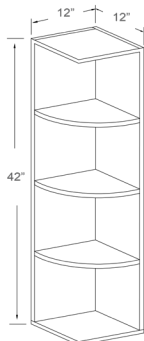
Features

3 Fixed Shelves
Matching Color Finish

General Info

Item Code	Dimension (WxHxD)	Weight
WOE1230	12 x 30 x 12 Inch	7.2 KG
WOE1236	12 x 36 x 12 Inch	7.8 KG

WALL END SHELF 42"H



Features

4 Fixed Shelves
Matching Color Finish

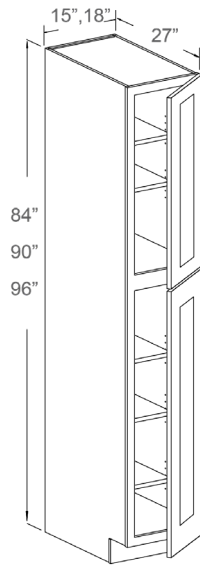
General Info

Item Code	Dimension (WxHxD)	Weight
WOE1242	12 x 42 x 12 Inch	9.5 KG

| PANTRY & OVEN CABINETS



PANTRY CABINET 84"H & 90"H & 96"H



Features

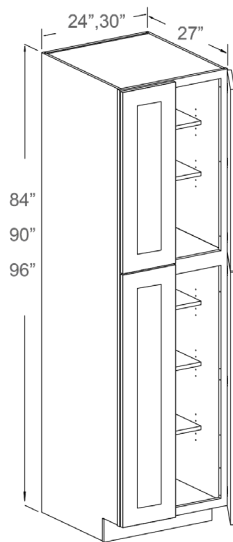
- 2 Doors
- 2 Adjustable Top Shelves
- 3 Adjustable Bottom Shelves

General Info

Item Code	Dimension (WxHxD)	Weight
TP158427	15 x 84 x 27 Inch	67 KG
TP188427	18 x 84 x 27 Inch	69 KG
TP159027	15 x 90 x 27 Inch	70 KG
TP189027	18 x 90 x 27 Inch	72.5 KG
TP159627	15 x 96 x 27 Inch	73 KG
TP189627	18 x 96 x 27 Inch	75 KG

** 3 Adjustable Top Shelves In 96"H Cabinet.*

PANTRY CABINET 84"H & 90"H & 96"H



Features

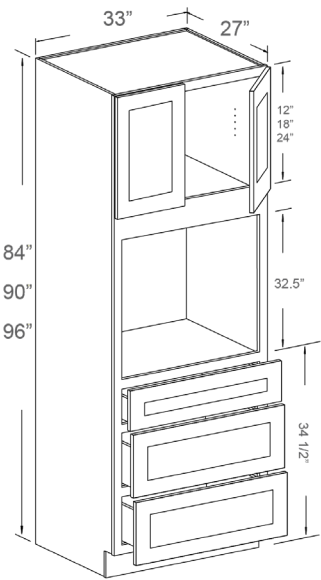
- 4 Doors
- 2 Adjustable Top Shelves
- 3 Adjustable Bottom Shelves

General Info

Item Code	Dimension (WxHxD)	Weight
TP248427	24 x 84 x 27 Inch	79 KG
TP308427	30 x 84 x 27 Inch	89 KG
TP249027	24 x 90 x 27 Inch	83 KG
TP309027	30 x 90 x 27 Inch	95 KG
TP249627	24 x 96 x 27 Inch	86 KG
TP309627	30 x 96 x 27 Inch	102 KG

** 3 Adjustable Top Shelves In 96"H Cabinet.*

TALL OVEN CABINET 84"H & 90"H & 96"H



Features

- 2 Doors
- 3 Drawers with 2 Removable
- Opening 32"H-50"H X 30" W

General Info

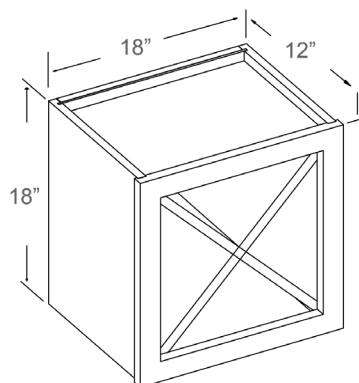
Item Code	Dimension (WxHxD)	Weight
OC338427(1D/3D)	33 x 84 x 27 Inch	105 KG
OC339027(1D/3D)	33 x 90 x 27 Inch	110 KG
OC339627(1D/3D)	33 x 96 x 27 Inch	119 KG

** 1 Adjustable Top Shelves In 96"H Cabinet.*

STORAGE & ORGANIZATION



CROSS CUBE WINE RACK



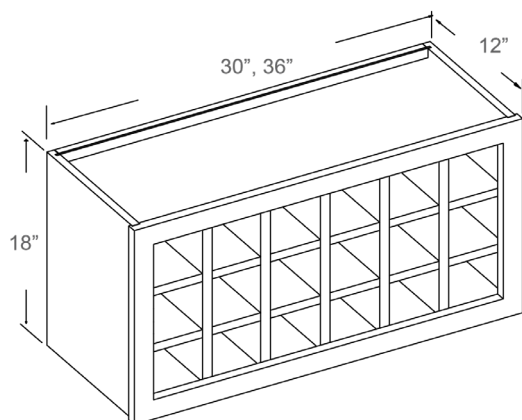
Features

4 Compartments
Matching Color Finish

General Info

Item Code	Dimension (WxHxD)	Weight
WR1818	18 x 18 x 12 Inch	12 KG

LATTICE WINE RACK



Features

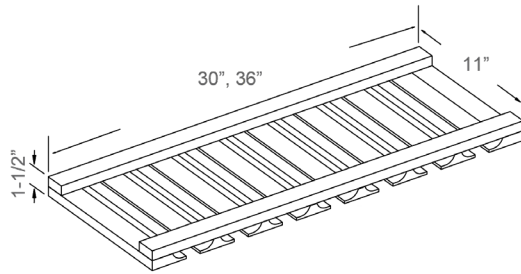
18 Compartments
Matching Color Finish

General Info

Item Code	Dimension (WxHxD)	Weight
WR3018	30 x 18 x 12 Inch	20.5 KG
WR3618	36 x 18 x 12 Inch	23 KG

** 21 Compartments for 36" W*

STEMWARE RACK



** 8 Rail Openings for 36" W*

Features

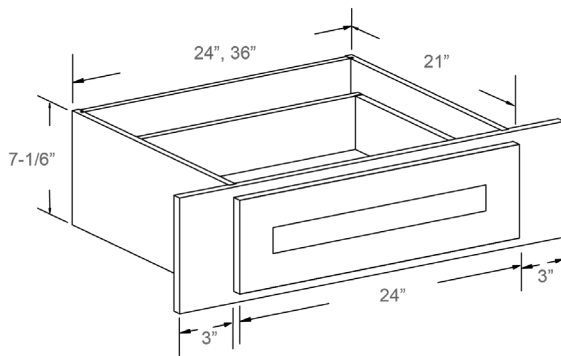
7 Rail Openings

Matching Color Finish

General Info

Item Code	Dimension (WxHxD)	Weight
SGH30	30 x 1 1/5 x 10 1/5 Inch	1.8 KG
SGH36	36 x 1 1/5 x 10 1/5 Inch	1.9 KG

KNEE DRAWER



** Can be trimmed 3" on both ends.*

Features

1 Drawer with Solid Wood Drawer Box

7-1/4" H

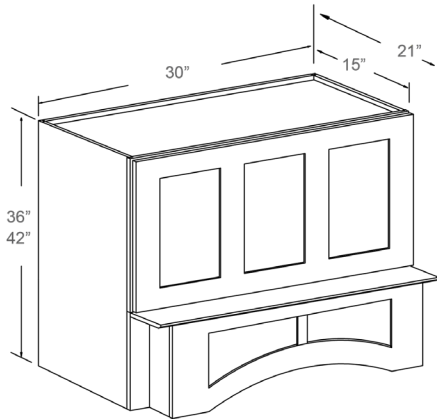
General Info

Item Code	Dimension (WxHxD)	Weight
KD24/30	30 x 7 1/4 x 21 Inch	14 KG
KD30/36	36 x 7 1/4 x 21 Inch	15 KG

HOODS, VALANCE, CORBEL & POSTS



ARCHED WOOD HOOD



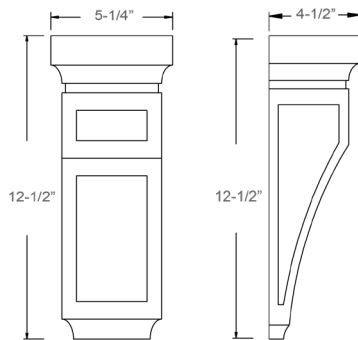
Features

1 Flip-Up Door

General Info

Item Code	Dimension (WxHxD)	Weight
RHA363021	36 x 30 x 21 Inch	47 KG
RHA423021	42 x 30 x 21 Inch	51 KG

CORBEL



Features

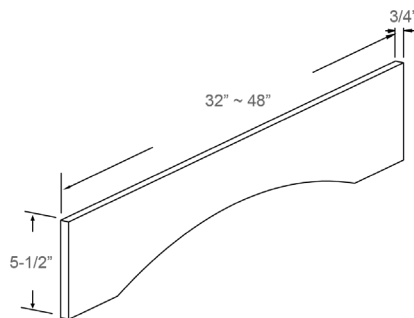
Solid Wood

Finished to Matching Color

General Info

Item Code	Dimension (WxHxD)	Weight
CML	5-1/4 x 12-1/2 x 4-1/2 Inch	1.4 KG

ARCH VALANCE



Features

3/4" Solid Wood

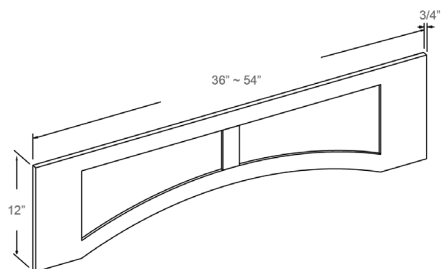
Matching Color

Finished on Edges

General Info

Item Code	Dimension (WxHxD)	Weight
VA32	32 x 5-1/2 x 3/4 Inch	1.8 KG
VA36	36 x 5-1/2 x 3/4 Inch	2.2 KG
VA42	42 x 5-1/2 x 3/4 Inch	2.7 KG
VA48	48 x 5-1/2 x 3/4 Inch	3 KG

ARCH VALANCE WITH DOOR STYLE



Features

3/4" Solid Wood

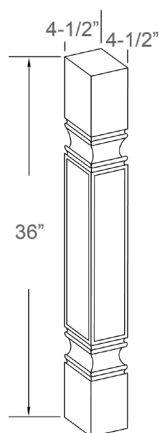
Matching Cabinet Color and Door Style

Finished on Edges

General Info

Item Code	Dimension (WxHxD)	Weight
VARP36	36 x 12 x 3/4 Inch	3 KG
VARP42	42 x 12 x 3/4 Inch	3.4 KG
VARP48	48 x 12 x 3/4 Inch	3.7 KG
VARP54	54 x 12 x 3/4 Inch	4.2 KG

STANDARD POST



Features

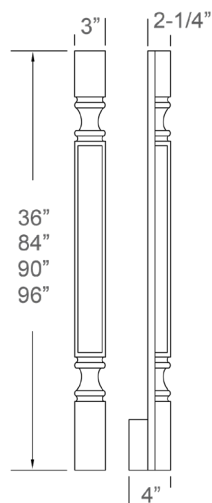
Solid Wood

Finished to Matching Color

General Info

Item Code	Dimension (WxHxD)	Weight
SP36	4-1/2 x 36 x 4-1/2 Inch	10 KG

PLAIN PILASTER



Features

Solid Wood

Finished to Matching Color

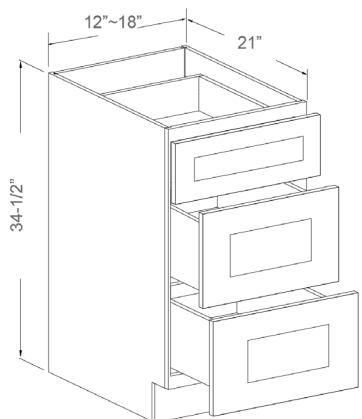
General Info

Item Code	Dimension (WxHxD)	Weight
PP-BASE	3 x 36 x 4 Inch	6 KG
PP-T84	3 x 84 x 4 Inch	12 KG
PP-T90	3 x 90 x 4 Inch	13 KG
PP-T96	3 x 96 x 4 Inch	14.5 KG

BATHROOM VANITIES



VANITY DRAWER CABINET



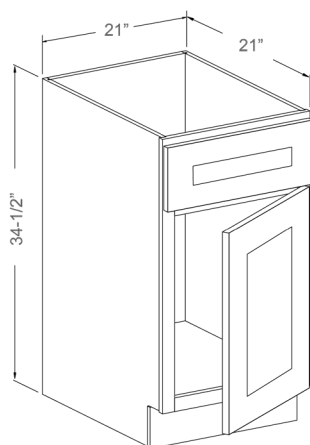
Features

- 1 Small Drawer
- 2 Large Drawers

General Info

Item Code	Dimension (WxHxD)	Weight
VDB12	12 x 34-1/2 x 21 Inch	27 KG
VDB15	15 x 34-1/2 x 21 Inch	30 KG
VDB18	18 x 34-1/2 x 21 Inch	31.5 KG

VANITY SINK CABINET



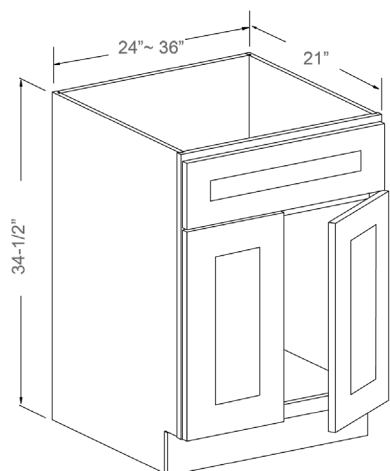
Features

- 1 Fixed Drawer
- 1 Door
- No Shelf

General Info

Item Code	Dimension (WxHxD)	Weight
VSB21	21 x 34-1/2 x 21 Inch	23.5 KG

VANITY SINK CABINET



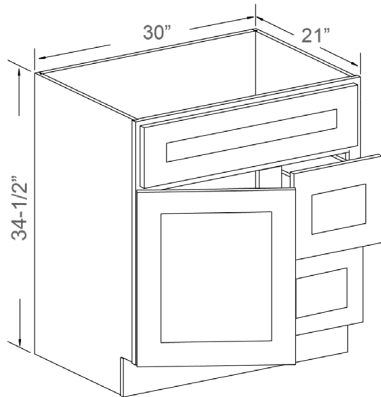
Features

- 1 Fixed Drawer
- 2 Doors
- No Shelf

General Info

Item Code	Dimension (WxHxD)	Weight
VSB24	24 x 34-1/2 x 21 Inch	19 KG
VSB27	27 x 34-1/2 x 21 Inch	20 KG
VSB30	30 x 34-1/2 x 21 Inch	22 KG
VSB36	36 x 34-1/2 x 21 Inch	24 KG

VANITY SINK CABINET WITH DRAWERS



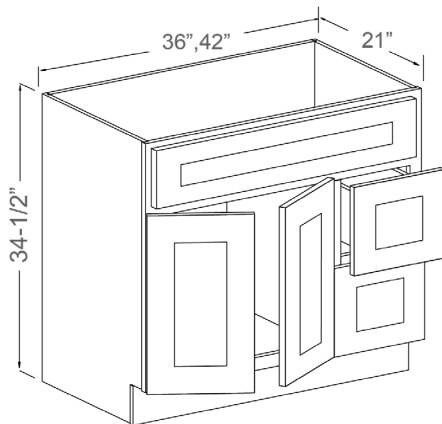
Features

- 2 Drawers on Right or Left
- 1 Door on Right or Left
- No Shelf

General Info

Item Code	Dimension (WxHxD)	Weight
VSD30(L/R)	30 x 34-1/2 x 21 Inch	34 KG

VANITY SINK CABINET WITH DRAWERS



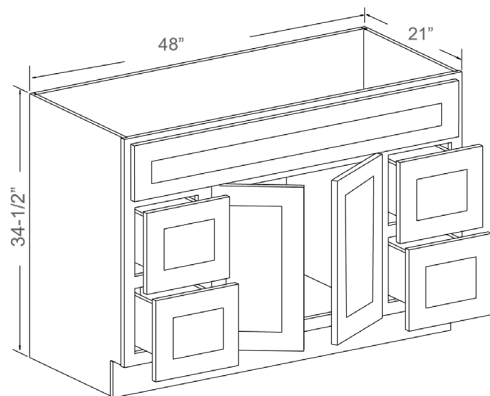
Features

- 2 Drawers on Right or Left
- 2 Doors on Right or Left
- No Shelf

General Info

Item Code	Dimension (WxHxD)	Weight
VSD36(L/R)	36 x 34-1/2 x 21 Inch	36 KG
VSD42(L/R)	42 x 34-1/2 x 21 Inch	39 KG

VANITY SINGLE SINK CABINET WITH DRAWERS



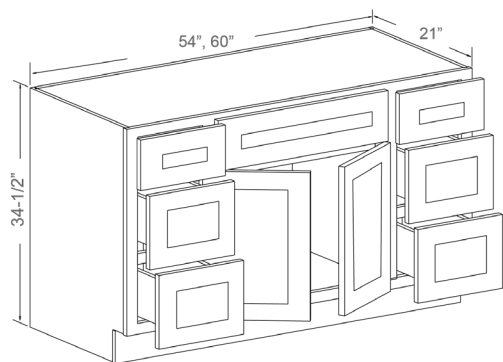
Features

- 4 Drawers
- 2 Doors
- No Shelf

General Info

Item Code	Dimension (WxHxD)	Weight
VSD48	48 x 34-1/2 x 21 Inch	52 KG

VANITY SINGLE SINK CABINET WITH DRAWERS



Features

6 Drawers

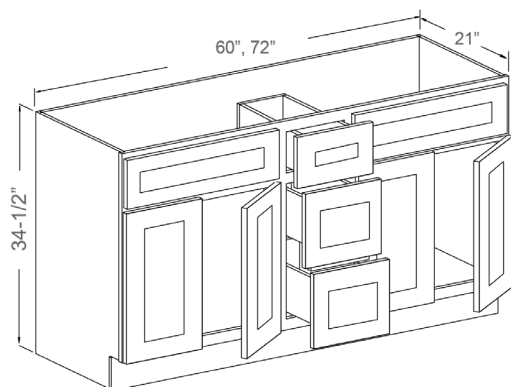
2 Doors

No Shelf

General Info

Item Code	Dimension (WxHxD)	Weight
VSD54	54 x 34-1/2 x 21 Inch	65 KG
VSD60(SINGLE)	60 x 34-1/2 x 21 Inch	69 KG

VANITY DOUBLE SINK CABINET WITH DRAWERS



Features

3 Drawers

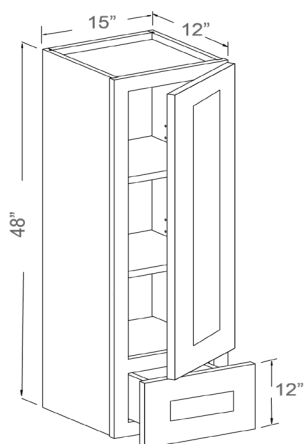
4 Doors

No Shelf

General Info

Item Code	Dimension (WxHxD)	Weight
VSD60(DOUBLE)	60 x 34-1/2 x 21 Inch	53 KG
VSD72(DOUBLE)	72 x 34-1/2 x 21 Inch	56 KG

VANITY COUNTER LINEN CABINET



Features

1 Small Drawer

1 Door

3 Adjustable Shelves

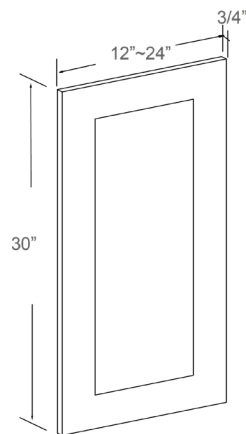
General Info

Item Code	Dimension (WxHxD)	Weight
VC1548	15 x 48 x 12 Inch	19 KG

DUMMY DOORS, DRAWERS & REPLACEMENTS



DECORATIVE DOOR



* NOT for Cabinet Door Replacement.

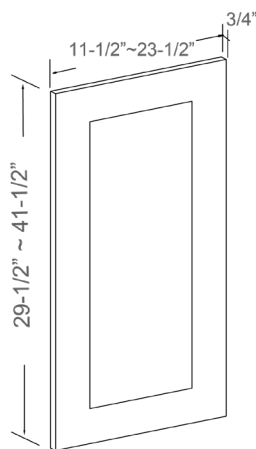
Features

Decorative Door Panel

General Info

Item Code	Dimension (WxHxD)	Weight
WP1230	12 x 30 x 3/4 Inch	2.2 KG
WP1530	15 x 30 x 3/4 Inch	3 KG
WP1830	18 x 30 x 3/4 Inch	3.7 KG
WP2130	21 x 30 x 3/4 Inch	4 KG
WP2430	24 x 30 x 3/4 Inch	4.5 KG

DECORATIVE DOOR FOR CABINET SIDE



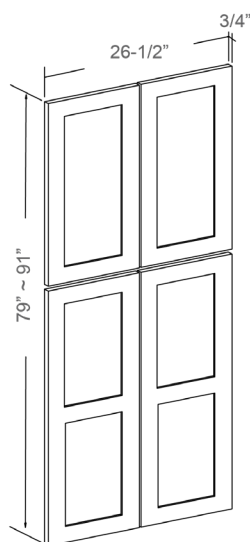
Features

Decorative Door Panel

General Info

Item Code	Dimension (WxHxD)	Weight
WP-W30	11-1/2 x 29-1/2 x 1/2 Inch	2.2 KG
WP-W36	11-1/2 x 35-1/2 x 1/2 Inch	2.7 KG
WP-W42	11-1/2 x 41-1/2 x 1/2 Inch	3.2 KG
WP-VDD	20-1/2 x 29-1/2 x 1/2 Inch	4 KG
WP-BASE	23-1/2 x 29-1/2 x 1/2 Inch	4.5 KG

DECORATIVE DOOR FOR PANTRY CABINET SIDE



Features

Decorative Door Panel

2 Bottom Doors 49.5" H x 13-1/4" W

General Info

Item Code	Dimension (WxHxD)	Weight
WP-T84	26-1/2 x 79 x 1/2 Inch	15.5 KG
WP-T90	26-1/2 x 85 x 1/2 Inch	17 KG
WP-T96	26-1/2 x 91 x 1/2 Inch	19 KG

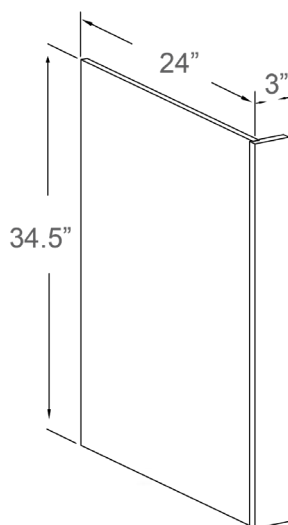
Description

FOR 84"H: 2 Top Doors 29.5" H x 13-1/4" W,
 FOR 90"H: 2 Top Doors 35.5" H x 13-1/4" W,
 FOR 96"H: 2 Top Doors 41.5" H x 13-1/4" W.

PANELS & FILLERS



DISHWASHER PANEL WITH RETURN FILLER



Features

3" Return Filler

5/8" Thick Panel

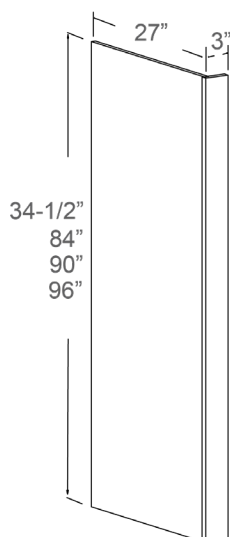
General Info

Item Code	Dimension (WxHxD)	Weight
DWR3	3 x 34-1/2 x 24 Inch	5.4 KG

Description

Matching Color Finish on Both Side and Filler.

REFRIGERATOR PANEL WITH RETURN FILLER



Features

3" Return Filler

5/8" Thick Panel

Matching Color Finish

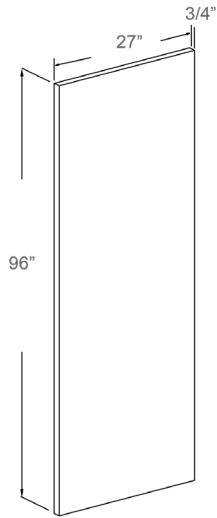
General Info

Item Code	Dimension (WxHxD)	Weight
REP8427(3)	3 x 84 x 27 Inch	16.7 KG
REP9027(3)	3 x 90 x 27 Inch	17.2 KG
REP9627(3)	3 x 96 x 27 Inch	18 KG

Description

Optional: 1-1/2" return filler sold separately (SKU#: TF1.5)

REFRIGERATOR PANEL



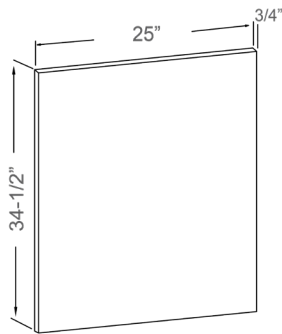
Features

- 3/4" Thick Panel
- 1 Side-Edge Matching Color
- 2 Sides Surfaces Matching Color

General Info

Item Code	Dimension (WxHxD)	Weight
RRP9627(3/4)	3/4 x 96 x 27 Inch	15.8 KG

BASE END PANEL



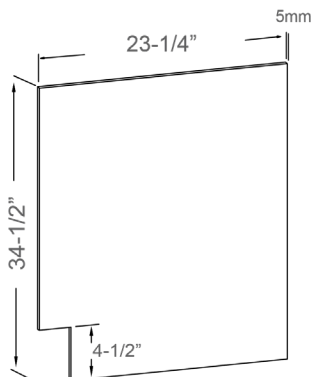
Features

- 3/4" Thick Panel
- 2 Side-Edges Matching Color
- 2 Sides Surfaces Matching Color

General Info

Item Code	Dimension (WxHxD)	Weight
BEP	25 x 34 1/2 x 3/4 Inch	6 KG

FINISHED SKIN PANEL FOR BASE CABINETS



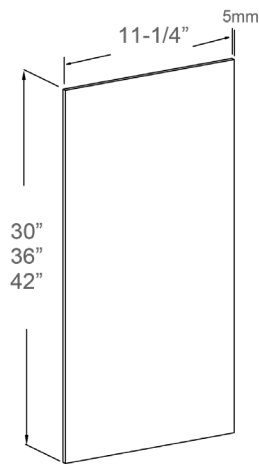
Features

- 1/5" Thick Panel
- Matching Color on Two Sides

General Info

Item Code	Dimension (WxHxD)	Weight
BS24	23-1/4 x 34-1/2 x 1/5 Inch	1.8 KG

FINISHED SKIN PANEL FOR WALL CABINETS



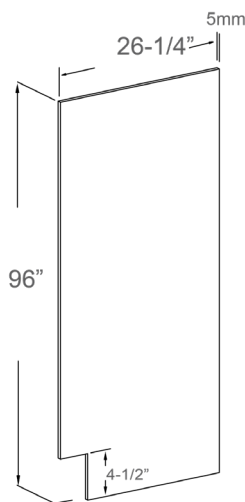
Features

- 1/5" Thick Panel
- Matching Color on Two Sides

General Info

Item Code	Dimension (WxHxD)	Weight
WS1230	11-1/4 x 30 x 1/5 Inch	0.7 KG
WS1236	11-1/4 x 36 x 1/5 Inch	0.9 KG
WS1242	11-1/4 x 42 x 1/5 Inch	1.2 KG
WS1542	14-1/4 x 42 x 1/5 Inch	1.6 KG

FINISHED SKIN PANEL FOR PANTRY CABINETS



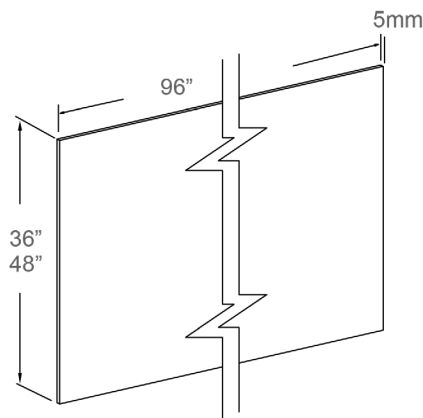
Features

- 1/5" Thick Panel
- Matching Color on Two Sides

General Info

Item Code	Dimension (WxHxD)	Weight
TS2796	26-1/4 x 96 x 1/5 Inch	4.3 KG

FINISHED SKIN PANEL



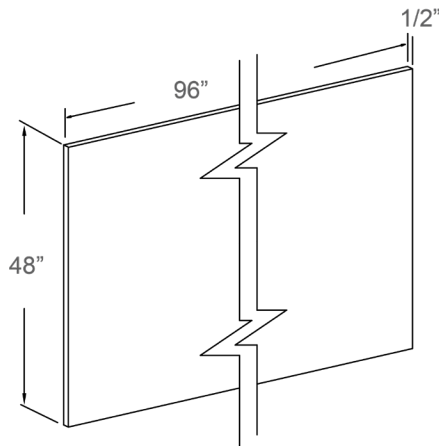
Features

- 1/5" Thick Panel
- Matching Color on Two Sides

General Info

Item Code	Dimension (WxHxD)	Weight
BP3696	96 x 36 x 1/5 Inch	5.4 KG
BP4896	96 x 48 x 1/5 Inch	6.3 KG

FINISHED PANEL BOARD



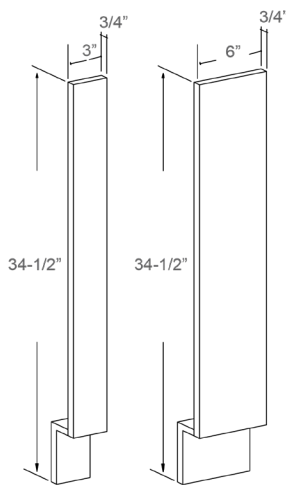
Features

- 1/2" Thick Panel
- 2 Side-Edges Matching Color
- 2 Sides Surfaces Matching Color

General Info

Item Code	Dimension (WxHxD)	Weight
BP4896(1/2)	96 x 48 x 1/2 Inch	15.5 KG

BASE FILLER



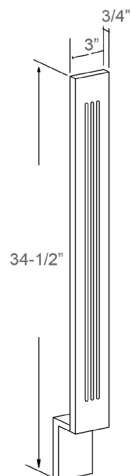
Features

- 3/4" Solid Wood
- Finished on One Face and Two Long Edges

General Info

Item Code	Dimension (WxHxD)	Weight
BF3	3 x 34-1/2 x 3/4 Inch	0.7 KG
BF6	6 x 34-1/2 x 3/4 Inch	1.5 KG

BASE FLUTED FILLER



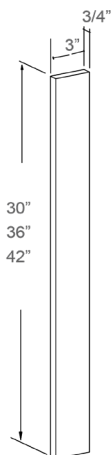
Features

- 3/4" Solid Wood
- Finished on Fluted Face and Two Long Edges

General Info

Item Code	Dimension (WxHxD)	Weight
BFF3	3 x 34-1/2 x 3/4 Inch	0.7 KG

WALL FILLER



Features

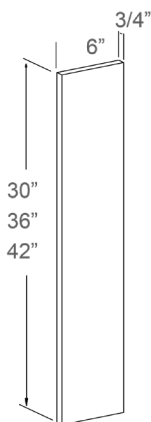
3/4" Solid Wood

Finished on One Face and Two Long Edges

General Info

Item Code	Dimension (WxHxD)	Weight
WF330	3 x 30 x 3/4 Inch	0.5 KG
WF336	3 x 36 x 3/4 Inch	0.7 KG
WF342	3 x 42 x 3/4 Inch	0.9 KG

WALL FILLER



Features

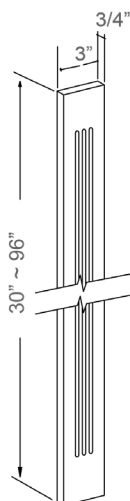
3/4" Solid Wood

Finished on One Face and Two Long Edges

General Info

Item Code	Dimension (WxHxD)	Weight
WF630	6 x 30 x 3/4 Inch	1.1 KG
WF636	6 x 36 x 3/4 Inch	1.5 KG
WF642	6 x 42 x 3/4 Inch	2.1 KG

WALL FLUTED FILLER



Features

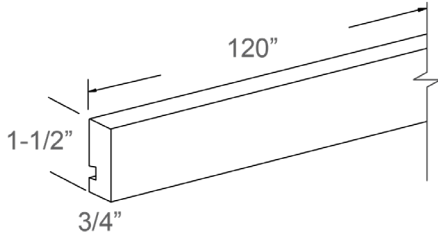
3/4" Solid Wood

Finished on Fluted Face and Two Long Edges

General Info

Item Code	Dimension (WxHxD)	Weight
WFF330	3 x 30 x 3/4 Inch	0.5 KG
WFF336	3 x 36 x 3/4 Inch	0.7 KG
WFF342	3 x 42 x 3/4 Inch	0.9 KG
WFF384	3 x 84 x 3/4 Inch	2.3 KG
WFF390	3 x 90 x 3/4 Inch	2.5 KG
WFF396	3 x 96 x 3/4 Inch	2.8 KG

TALL FILLER WITH DOVETAIL



Features

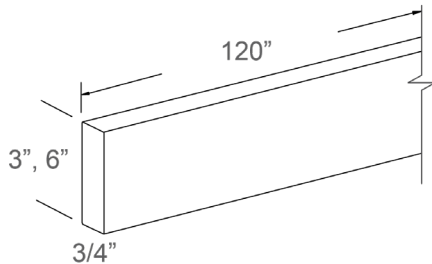
3/4" Solid Wood with Grooved Face

For Refrigerator Return & Customized Frames

General Info

Item Code	Dimension (WxHxD)	Weight
TF1.5	1-1/2 x 120 x 3/4 Inch	1.4 KG

TALL FILLER



Features

3/4" Solid Wood

Finished on One Face and Two Long Edges

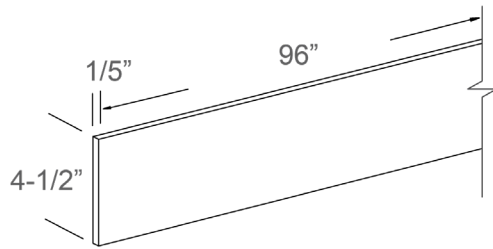
General Info

Item Code	Dimension (WxHxD)	Weight
TF3	3 x 120 x 3/4 Inch	2.8 KG
TF6	6 x 120 x 3/4 Inch	5 KG

| MOLDINGS



TOE KICK



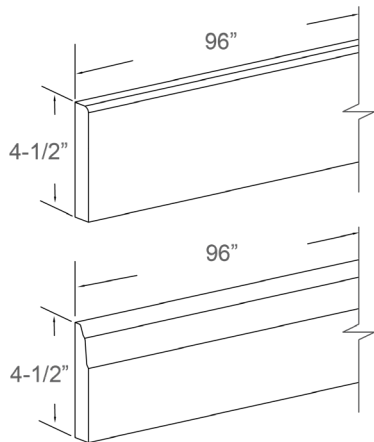
Features

1/5" Thick Panel
Matching Color

General Info

Item Code	Dimension (WxHxD)	Weight
TK8	96 x 4-1/2 x 1/5 Inch	0.6 KG

BASE MOLDING



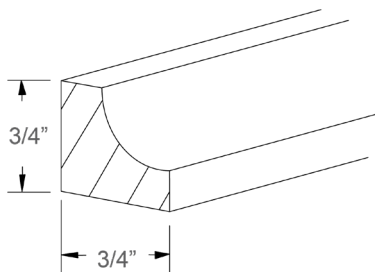
Features

Solid Wood
Matching Color

General Info

Item Code	Dimension (WxHxD)	Weight
BBM1	96 x 4-1/2 x 3/4 Inch	3 KG
BBM2	96 x 4-1/2 x 3/4 Inch	3.5 KG

INSIDE CORNER MOLDING



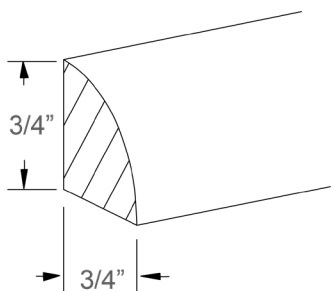
Features

Solid Wood
Matching Color

General Info

Item Code	Dimension (WxHxD)	Weight
ICM8	96 x 3/4 x 3/4 Inch	0.6 KG

QUARTER ROUND MOLDING



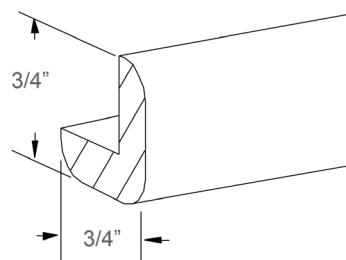
Features

Solid wood
Matching Color

General Info

Item Code	Dimension (WxHxD)	Weight
QRM8	96 x 3/4 x 3/4 Inch	0.6 KG

OUTSIDE CORNER MOLDING



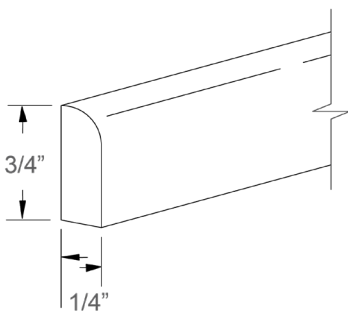
Features

Solid Wood
Matching Color

General Info

Item Code	Dimension (WxHxD)	Weight
OCM8	96 x 3/4 x 3/4 Inch	0.45 KG

SCRIBE MOLDING



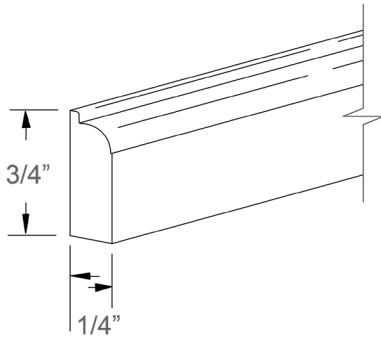
Features

Solid Wood
Matching Color

General Info

Item Code	Dimension (WxHxD)	Weight
SM8-S	96 x 3/4 x 1/4 Inch	0.3 KG

DECORATIVE SCRIBE MOLDING



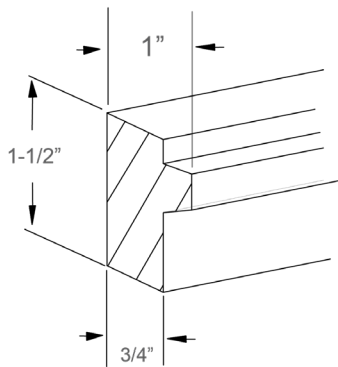
Features

Solid wood
Matching Color

General Info

Item Code	Dimension (WxHxD)	Weight
SM8-D	96 x 1-1/4 x 2/5 Inch	0.3 KG

SIMPLICITY LIGHT RAIL MOLDING



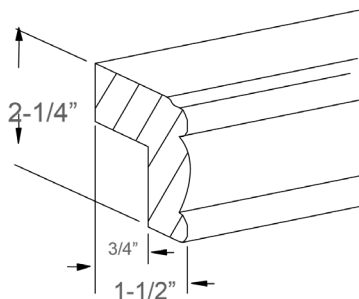
Features

Solid Wood
Matching Color

General Info

Item Code	Dimension (WxHxD)	Weight
LRM1	120 x 1-1/2 x 1 Inch	1.3 KG

TRADITIONAL LIGHT RAIL MOLDING



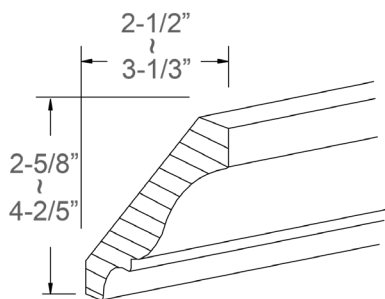
Features

Solid Wood
Matching Color

General Info

Item Code	Dimension (WxHxD)	Weight
LRM2	120 x 2-1/3 x 1-4/7 Inch	1.8 KG

CROWN MOLDING



Features

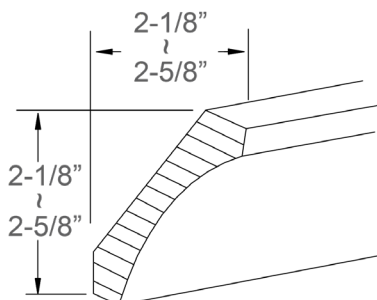
Solid wood

Matching Color

General Info

Item Code	Dimension (WxHxD)	Weight
CM-1	120 x 3-1/2 x 3/4 Inch	3 KG
CM-6	120 x 4-1/4 x 3/4 Inch	4 KG
CM-6-5.5	120 x 5-1/2 x 3/4 Inch	5.2kg

COVE MOLDING



Features

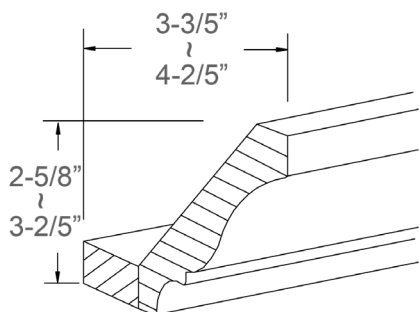
Solid Wood

Matching Color

General Info

Item Code	Dimension (WxHxD)	Weight
CM-3	120 x 3 x 3/4 Inch	1.6 KG
CM-4	120 x 3-7/9 x 3/4 Inch	1.9 KG

CROWN MOLDING WITH BASE



Features

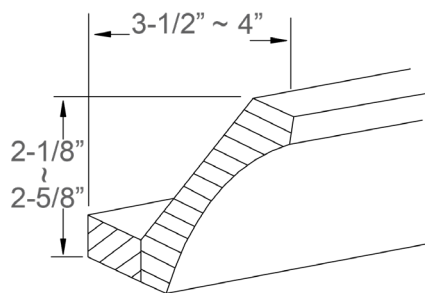
Solid wood

Matching Color

General Info

Item Code	Dimension (WxHxD)	Weight
CM-1B	120 x 3-1/2 x 3/4 Inch	3.6 KG
CM-6B	120 x 4-1/4 x 3/4 Inch	5.4 KG

COVE MOLDING WITH BASE



Features

- Solid Wood
- Matching Color

General Info

Item Code	Dimension (WxHxD)	Weight
CM-3B	120 x 3 x 3/4 Inch	3.2 KG
CM-4B	120 x 3-7/9 x 3/4 Inch	4 KG



Woodworth Cabinetry

Unit 2, 854 Westport crescent,
Mississauga, ON L5T 1N5